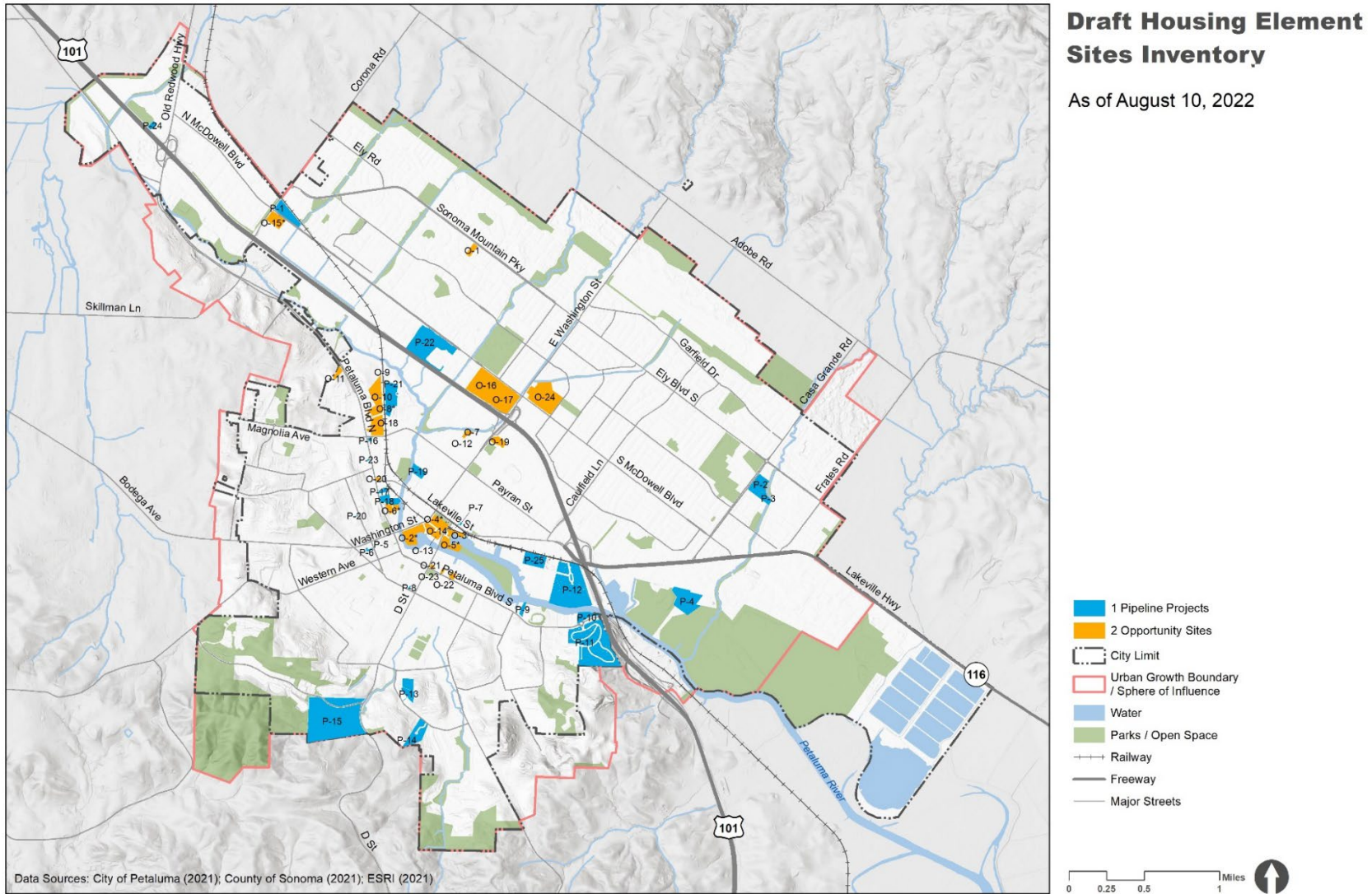


Figure 1: Housing Sites Map for Pipeline Site and Opportunity Sites August 2022



**Opportunity Sites for Draft Housing Sites Inventory August 2022**

Site #	Max Density	5 <sup>th</sup> Cycle?	Site Address	Owner's Name	Acres	Low Income Units	Moderate Income Units	Above Mod Income Units	Total Units
<b>Vacant</b>									
O-3	45	Y	310 D St	Menary David III TR et al	0.24	-	-	8	8
O-5*	45	Y	6 Copeland St	Lind Michael J Tr & Lind Barbara J TR	6.01	20	-	112	132
O-6*	45	Y	300 Water St	Water Street Properties LLC	2.92	13	-	80	93
O-7	30	Y	901 Martin Cir	Kenilworth Apts LLC Et Al	0.44	-	-	9	9
O-13*	45	Y	215 Weller St	Pacifica Haystack LP	3.75	59	44	44	147
O-20	30	N	600 Petaluma Blvd N	Zibura-Strong Jeanette E TR	0.39	-	-	8	8
O-21	45	N	201 Petaluma Blvd S	Union Oil Company Of California	0.47	-	-	15	15
O-22	45	N	409 Petaluma Blvd S	Baker A W & Alice M	0.96	-	-	30	30
O-23	45	N	307 Petaluma Blvd S	City of Petaluma	0.46	-	-	14	14
<b>Parking Lots of Shopping Centers</b>									
O-16	20	N	N McDowell Blvd between N Washington and Lynch Creek* Plaza North	Syers Properties I LP	8.81	-	-	31	31
O-17	20	N	151 N McDowell Blvd	Novak Property LLC	6.4	-	-	22	22
O-18	20	N	1026 Petaluma Blvd N	Barstone Corp	5.4	--	-	19	19
O-19	30	N	401 Kenilworth Dr Ste 310	Vestar Petaluma Ewp LLC	2.90	21	-	119	140
O-24	20	N	351 S McDowell Blvd	Washington Square Associates	8.6	-	-	30	30
<b>Underutilized</b>									
O-1	8	Y	557 Sonoma Mountain Pkwy	Bascherini Armand R TR & Marjorie M TR	1.92	-	-	11	11
O-2*	45	Y	2 E Washington St	Golden Eagle Delaware LLC	7.31	92	69	69	230
O-4*	45	Y	315 E D St	Sonoma-Marin Area Rail Transit District	4.72	200	200	-	400
O-8*	30	Y	49 Shasta Ave	Shasta Properties LLC	3.56	75	-	-	75

**Revised Draft Site Inventory Table and Maps**

**Provide Feedback:** [planpetaluma.com/housingelementdraft](http://planpetaluma.com/housingelementdraft)

O-9	18	Y	195 Cinnabar Ave	Thompson Richard J TR et al	4.32	-	54	-	54
O-10	18	Y	1250 Petaluma Blvd N	Baker Arthur Winton Jr TR	2.54	-	32		32
O-11	8	Y	1825 Petaluma Blvd N	Cooper Alvin TR et al	1.47	-	-	8	8
O-12	18		109 Ellis St	De Cristo Don Joseph TR	0.70	-	13	-	13
O-14	45	Y	15 Copeland St	Lafranchi Melvin Bruno Tr & Lafranchi Nancy Lorrai	0.15	-	-	5	5
O-15*	30	Y	276 Corona Rd	Johnson Larry R TR et al	5.04	42	32	32	106
<b>Total</b>						<b>522</b>	<b>444</b>	<b>666</b>	<b>1,632</b>

**Pipeline Sites for Draft Housing Sites Inventory August 2022**

Site #	Max Density	5 <sup>th</sup> Cycle?	Site Address	Project Name	Acres	Low Income Units	Moderate Income Units	Above Mod Income Units	Total Units
P-1	30 u/a	Y	890 N. McDowell Blvd.	Meridian at Corona Station	7	81	49	1	131
P-2	18	Y	270 & 280 Casa Grande Road	Creekwood TPM & SPAR - A	5.15	5	4	50	59
P-3	18	Y	240 & 250 Casa Grande	Casa Grande	4.57	3	2	31	36
P-4	30	Y	2592 Casa Grande Road	Riverview Apartments A	14.52	-	-	264	264
P-5	30	N	131 Liberty St	Foley-Omahony Mixed Use Building	0.33	-	-	10	10
P-6	30	N	136 Court Street	Omahoney Work/Live	0.10	-	-	3	3
P-7	30	N	315 Lakeville St	Sepaher Residential Building	0.18	-	-	4	4
P-8	12	N	107 6th St	107 6th Street	0.14	-	1	-	1
P-9	30	Y	951 Petaluma Blvd S	PEP Housing Senior Housing	1.31	53	-	1	54
P-10	30	Y	1601 Petaluma Blvd. S	Burbank Affordable Housing (SB-35) A	3.07	49	-	1	50
P-11	12	Y	Jade Street	Quarry Heights (Lomas) A	46.78	-	-	91	91
P-12	unlimited	Y	700 Caulfield Ln	Riverfront LLC A	35.7	-	-	228	228
P-13	8	Y	289 Sunnyslope Rd	Nobmann Residence	6.13	-	-	1	1
P-14	2.5	Y	674 Sunnyslope Road	Sunnyslope II / The Oaks At Sunnyslope	0.25	-	-	7	7
P-15	2.5	Y	Windsor And D Street	Scott Ranch A	58.97	-	-	28	28
P-16	30	Y	890 Petaluma Blvd N	890 PBN Co-Op Housing	0.37	1	-	6	7
P-17	unlimited	Y	414 Petaluma Blvd N	Midpen Affordable Housing (Sb-35)	0.67	44	-	-	44
P-18	unlimited	Y	402 Petaluma Blvd N	North River Apartments	3.85	-	-	184	184
P-19	12	Y	529 Madison St	Riverbend PUD, SPAR And Subdivision	3.38	2	2	23	27
P-20	18	Y	325 Liberty St	Borsian Residence HSPAR	0.06	-	-	1	1
P-21	18	Y	18 Bernice Ct	Sid Commons	9.44	18	-	162	180
P-22	30	N	435 N McDowell Blvd	Deer Creek Residential	24.52	-	-	129	129

**Revised Draft Site Inventory Table and Maps**

**Provide Feedback:** [planpetaluma.com/housingelementdraft](http://planpetaluma.com/housingelementdraft)

P-23	30	N	719 Petaluma Blvd N	Cherry Suites	0.09	-	-	3	3
P-24		N	5135 Montero Way	Homekey		60	-	1	61
P-25	30	N	900 Hopper St	People's Village	7.44	25	-	-	25
TOTAL						341	58	1,229	1,628