

General Plan Advisory Committee Meeting

November 17, 2022

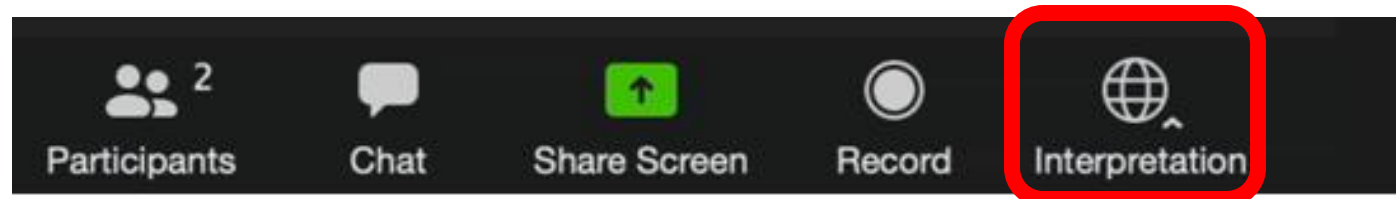
Zoom – La interpretación

- Interpretation

La interpretación en simultáneo para esta reunión se dará en los siguientes idiomas:

Español (Maria Galvez & Martin Rivarola) – bajo la opción Español

Por favor haz clic en el icono INTERPRETATION en tu barra de herramientas para acceder al idioma deseado

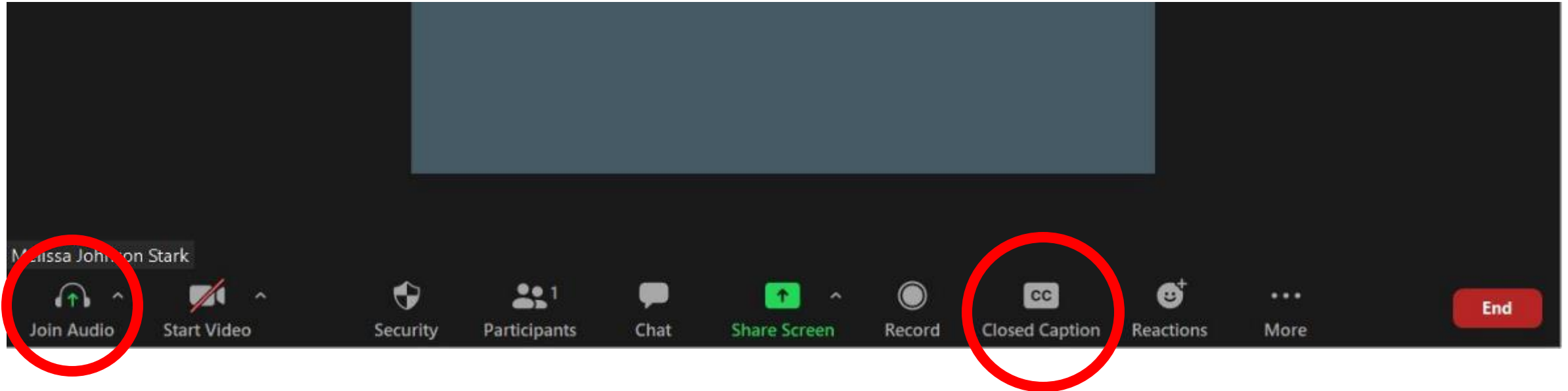


GPAC Roll Call

1. Dave Alden
2. Stephanie Blake
3. Phil Boyle
4. Erin Chmielewski
5. Delia Diaz
6. Mary Dooley
7. Sierra Downey
8. Jessie Feller
9. Ali Gaylord
10. Yensi Jacobo
11. Roger Leventhal
12. Iliana Inzunza Madrigal
13. Roberto Rosila Mares
14. Kris Rebillot
15. Bill Rinehart
16. John Shribbs
17. Joshua Riley Simmons
18. Janice Cader Thompson
19. Bill Wolpert

Logistics

Zoom Instructions

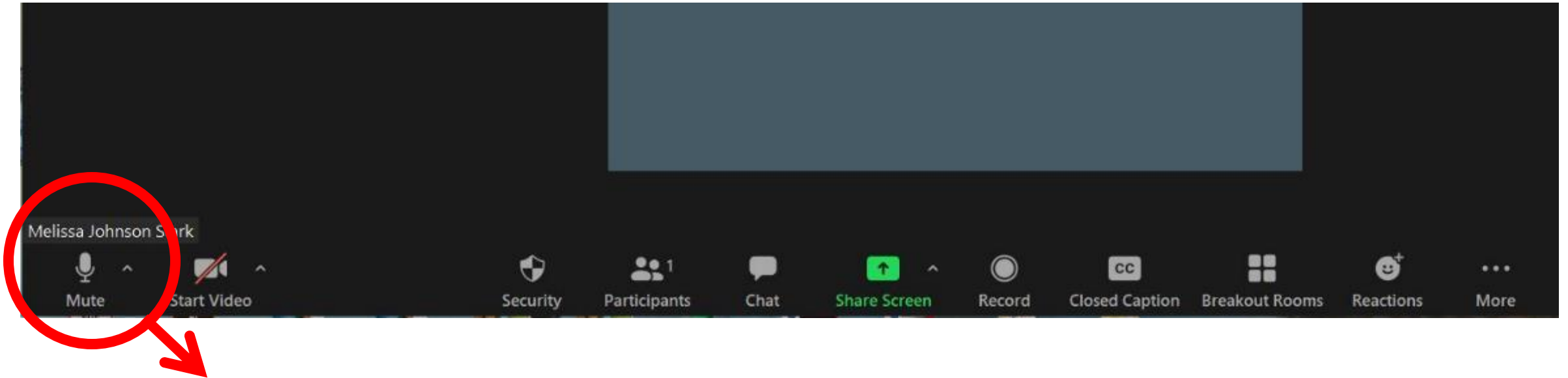


Join Audio

- Two options:
 - *Use your device's audio*
 - *Call in using a cell phone*

Closed Caption is available

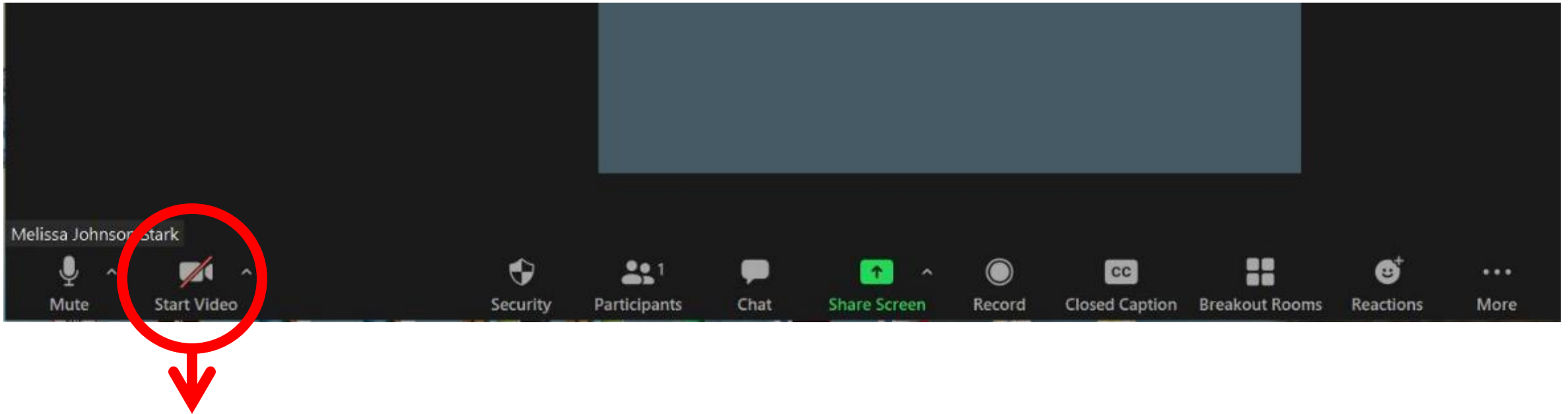
Zoom Instructions



Once Audio is Connected – Please Mute

- Please remain muted until it is your turn to speak
- To un-mute, press the same button

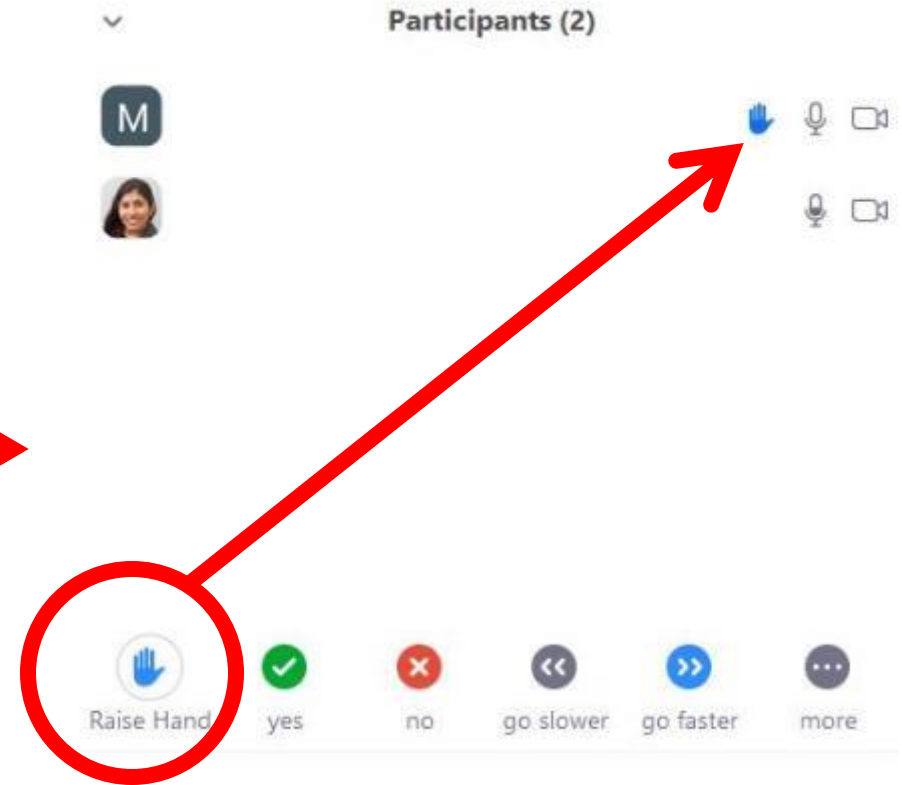
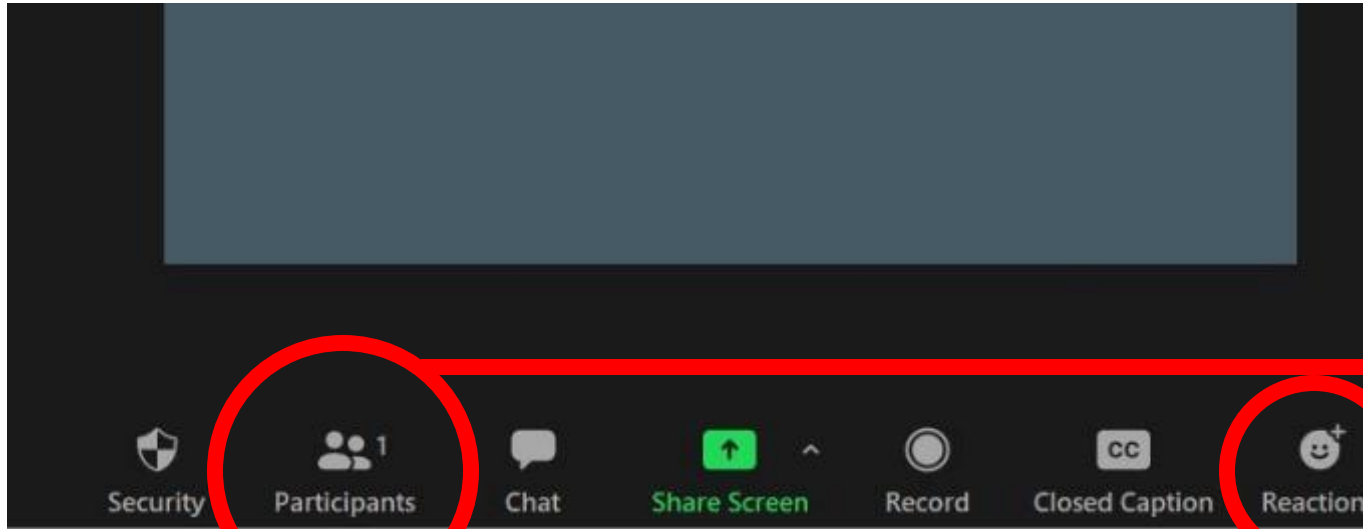
Zoom Instructions



Start Video (GPAC Only)

- **GPAC:** Please keep your camera on for the duration of the meeting
- **Public:** Please keep your camera off unless speaking during public comment

Zoom Instructions



Raise your “Hand” to Speak

- Please use the “Raise Hand” feature if you want to speak – the team will call on GPAC members individually. Please remain muted until called on.
- **Public:** Please only raise your hand during public comment. You can also use the **Q+A function** to send the Host questions during the meeting.

Zoom – What You Need To Know

For any technical difficulties, please email

Daniel Harrison at

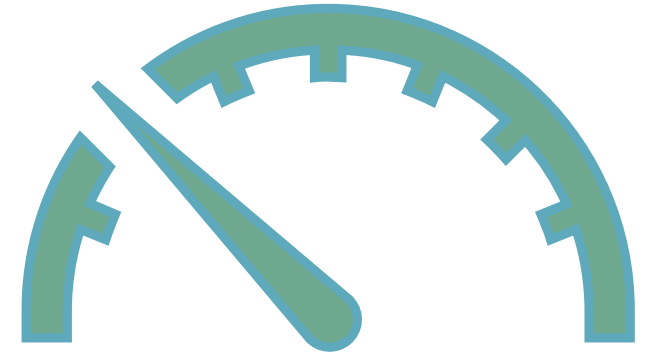
dharrison@cityofpetaluma.org

Para cualquier dificultad técnica, envíe un correo electrónico a Maria Galvez:

mapigalvez@gmail.com

Supporting Access and Live Interpretation

- Please remember to speak slowly given that our interpreters are working hard to translate accurately
- Reduce the use of Acronyms and make sure to explain them when you use



Meeting Overview

6:30pm: Roll Call and Logistics

6:40pm: General Public Comment

6:50pm: Project and Staff Updates

7:00pm: Natural Resources Policy & Strategy Ideas

- Presentation
 - GPAC questions & check-ins throughout
- Public Comment
- GPAC wrap-up discussion

8:55pm: Final GPAC Thoughts



General Public Comment

Project & Staff Updates

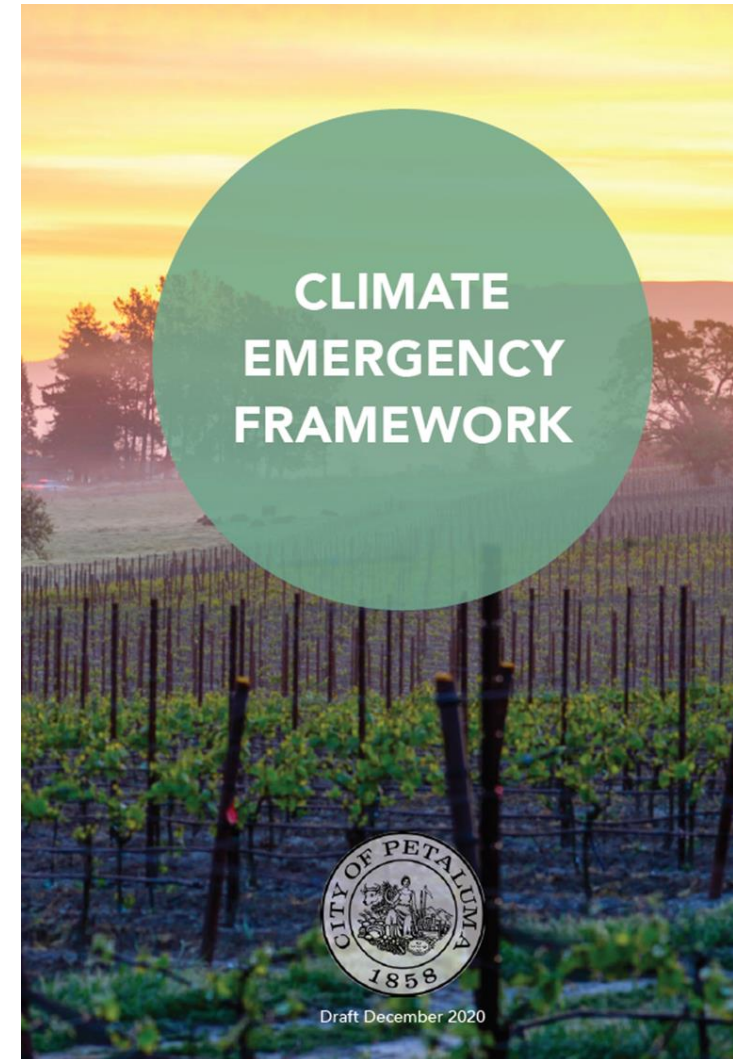


Fairgrounds Visioning Project

- **October 24:** City Council direction to work with the Fair Board to ensure ongoing financial stability and work to transition property management to the City
- www.cityofpetaluma.org/fairgrounds

Climate Action Planning

- **Now:** Staff working with Raimi to revise draft Greenhouse Gas reduction policies and timelines
- **Fall/Winter:** Engagement with CAC on administrative draft
- **Winter:** Public Draft
- Continue to align General Plan, VMT reductions, GHG Reduction Strategy, adaptation planning, and GP CEQA EIR



Mapping the River: Floodplain and Sea Level Rise

- **Now:** Staff working with Wood Consulting and Sherwood Engineers on draft model runs
- **Early 2023:** Discussion of updated mapping with the community





A Riverfront Park adds 20 acres of park land for the city as well as 26 acres of restored wetlands for flood protection.

Reduce Heat U

Trees within the pub components of the i trees provide benefi help alleviate enviro shade and if properl energy use. Additi stormwater runoff g slow rain from react store rainfall to be r provide other benefi carbon storage, redu Studies also have st have positive effects function.

Urban areas general trees. Cities in the p and maintaining tree hazards for houses, provide healthy tree benefits, trees need In urban environme infrastructure to sup

Trees in urban envin well aerated, and mo conditions allow tree components they re oxygen, and water. I volume of root, oxyg roots to support the in urban conditions of soil per tree. Tree and reduce flooding cubic feet of good se 200 cubic feet of wa modular tree cells a achievable for urban

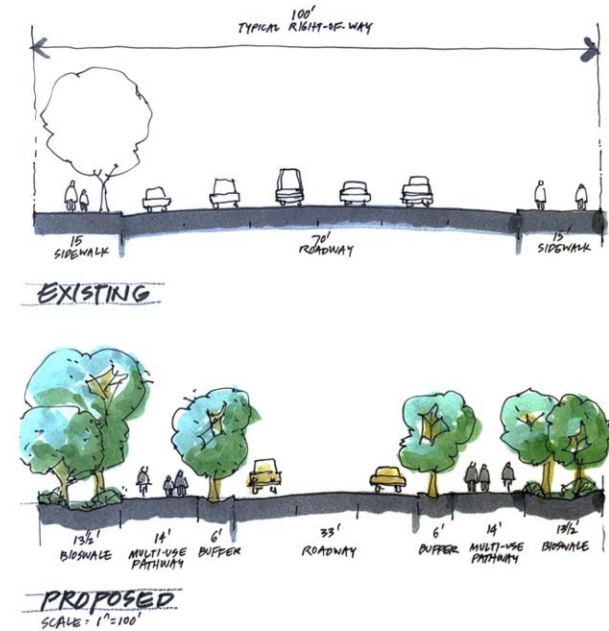
Recently, tree canop issue. American For

August 5-8, 2022



Reimagining Petaluma

Petaluma, CA DAT Report



Narrow existing roadways to reduce them as barriers to active transportation.

Proposed cross-tow extend Rainier Avenue walking and bicycling future barriers to act

Crossings for paved should prioritize safe and bicyclists traveli crossings with high-trail usage.

Critical Next Step Study and prioritize grade separation.

Make sidewalks The Americans with public facilities comp Board's Accessibility Guidelines include ge paved trails, crossing

Many of Petaluma's stops require upgrad with disabilities while such as children on b While the City owns of-way, Petaluman p the responsibility to arrangement often re sidewalks that open homeowners—are ur

Furthermore, the Cit currently only addre curbs and doesn't inc or reconstructing no

Implementation The City of Petaluma sidewalks and curb r reconstruction to co Guidelines, beyond t

The SDAT Report is Here!

Other updates?

- Sign up for the Community Update and Meeting notices!
- CityOfPetaluma.org/Subscribe



HAGA CLIC AQUÍ PARA LEER ESTE CORREO ELECTRÓNICO EN ESPAÑOL

Community Update for October 19, 2022

Happy Wednesday, Petaluma!

Halloween is right around the corner and we love seeing our community getting into the fall spirit with festivities and decorations! As more holidays quickly approach, make sure to mark your calendars for local events and happenings the whole family will enjoy. You can see a full list of upcoming activities by visiting: visitpetaluma.org/events.

This evening, we're sharing an update from the fire department, opportunities to weigh in on multiple City projects, and much more. Please enjoy, share with your friends, and have a wonderful evening. We'll see you in your inbox next Wednesday!



Fall 2022-Winter 2023

- November-January: HCD review of Housing Element
- Fall 2022: Draft Climate Action Plans
- Fall 2022 – Winter 2023: Draft General Plan Policy Frameworks and Alternatives
 - October, November, December, and future GPAC Discussions
- Winter 2023: GPAC and Department Discussion of Policy Frameworks and Alternatives
- Spring 2023: Topic- and Area-Focused Community Meetings



Clarifying Questions from GPAC Members

General Plan Policy & Strategy Ideas

Policy Frameworks

- Purpose: outline the proposed General Plan goals, policies, and implementation actions for each element of the General Plan
- Next incremental planning step that follows:
 - Existing conditions
 - Community vision, pillars, and principles
 - Recent strategy meetings
- Lay the groundwork for the next step in the planning process – the Administrative Draft General Plan



Natural Resources

Physical Planning as "Layers"

Development Patterns



Homes
Jobs
Economy

Building Blocks



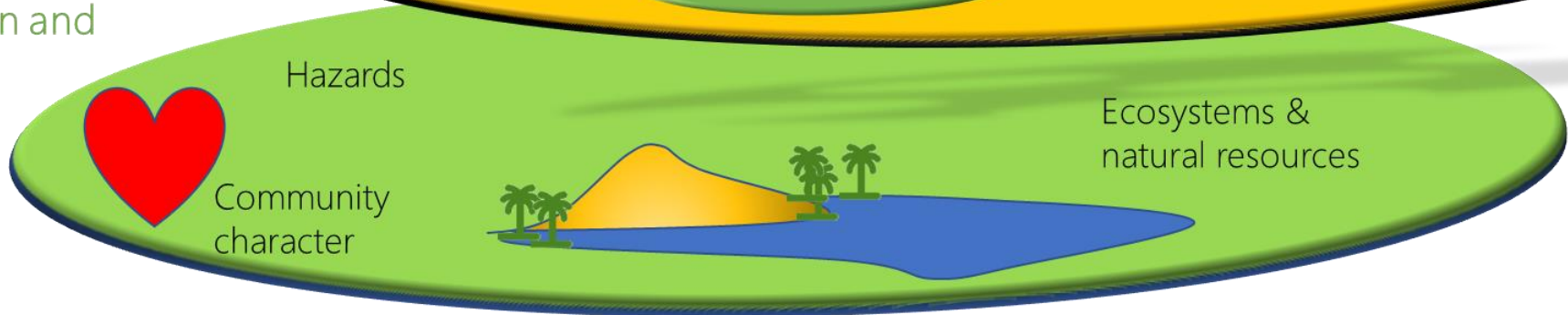
Infrastructure

Public
services

Land Use Policy



Conservation and
Hazards



Hazards

Ecosystems &
natural resources

Community
character

Presentation Overview

- Natural Resources Management
 - Role of City government
 - Natural resources in the General Plan
- Existing Conditions
- Community Direction
- GPAC Recommendations
- Policy & Strategy Ideas



Natural Resources Management

Roles of a City Government in Natural Resource Management

- **The City can act through informed land use decision making:**
 - **Own or control** land
 - **Regulate** use of land
 - **Manage** land
 - **Partnerships** with NGO and agency partners
 - **Environmental review** of projects (CEQA)

- **The City is limited in resources management** regarding:
 - Managing **utilities** and **water conveyance**
 - Managing **private land** and **public regional and State land**
 - Managing **regional resources** such as biological, water, and air resources

Local landowners, State and regional agencies, and special districts oversee these

General Plan Requirements

Open Space Element Requirements

- Government Code section 65560 requirements:
 - Natural resources
 - Managed protection of resources
 - Outdoor recreation
 - Public health and safety
 - Military support

Conservation Element Requirements

- Government Code section 65302(d) requirements:
 - Prevention, control, and correction of the erosion of soils, beaches, and shores;
 - Protection of watersheds; and
 - Identification of rivers, creeks, streams, flood corridors, riparian habitats, and land that may accommodate floodwater for purposes of groundwater recharge and stormwater management.

General Plan Requirements

Additional Open Space Element Requirements

- **Senate Bill 1425:** requires Open Space Elements to include policies and programs that address the following topics:
 - **Access to open space for all residents** in a manner that considers social, economic, and racial equity, **correlated with the environmental justice element or environmental justice policies** in the general plan, as applicable
 - **Climate resilience and other benefits of open space**, correlated with the Safety Element
 - **Rewilding opportunities**, correlated with the land use element

General Plan Requirements

Additional Conservation Element Requirements

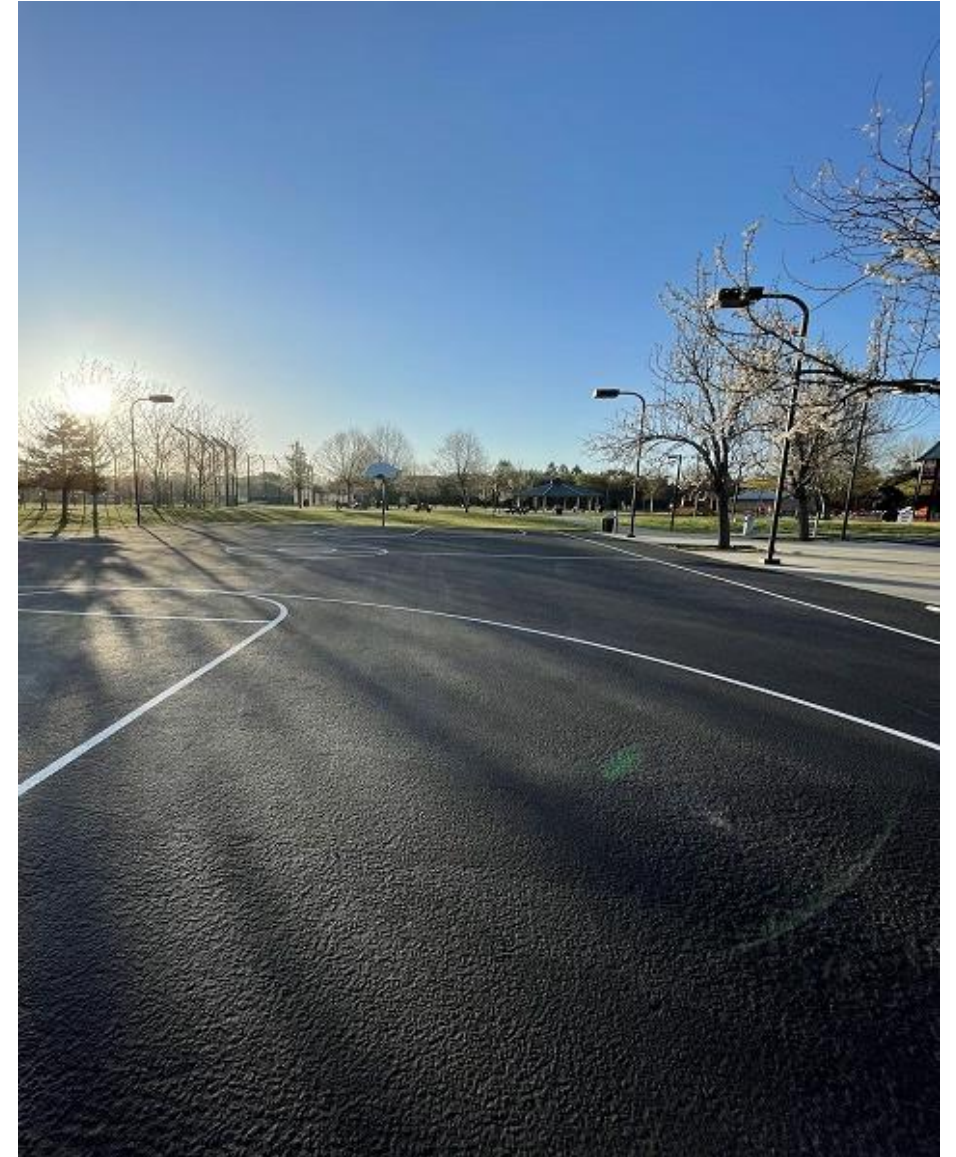
- **Assembly Bill 1358:** requires, upon the next revision of the housing element on or after January 1, 2009, the conservation element shall **identify rivers, creeks, streams, flood corridors, riparian habitats, and land that may accommodate floodwater** for purposes of groundwater recharge and stormwater management.

Natural Resources in the current General Plan

- **The existing General Plan addresses:**
 - **Water resources and quality**
 - Wetland and River ecosystems
 - Groundwater recharge
 - **Biological resources**
 - Special-status plant and animal species
 - Aquatic and riparian species
 - Habitat areas
- **Natural resources areas**
 - Sonoma Valley Wildlife Corridor Project
 - Sonoma County Agricultural Preservation and Open Space District

Natural Resources in the current General Plan

- This Element will NOT cover:
 - Sea level rise and climate change
 - Parks and recreation
 - Utilities, including energy, solid waste, wastewater, potable water systems



Existing Conditions

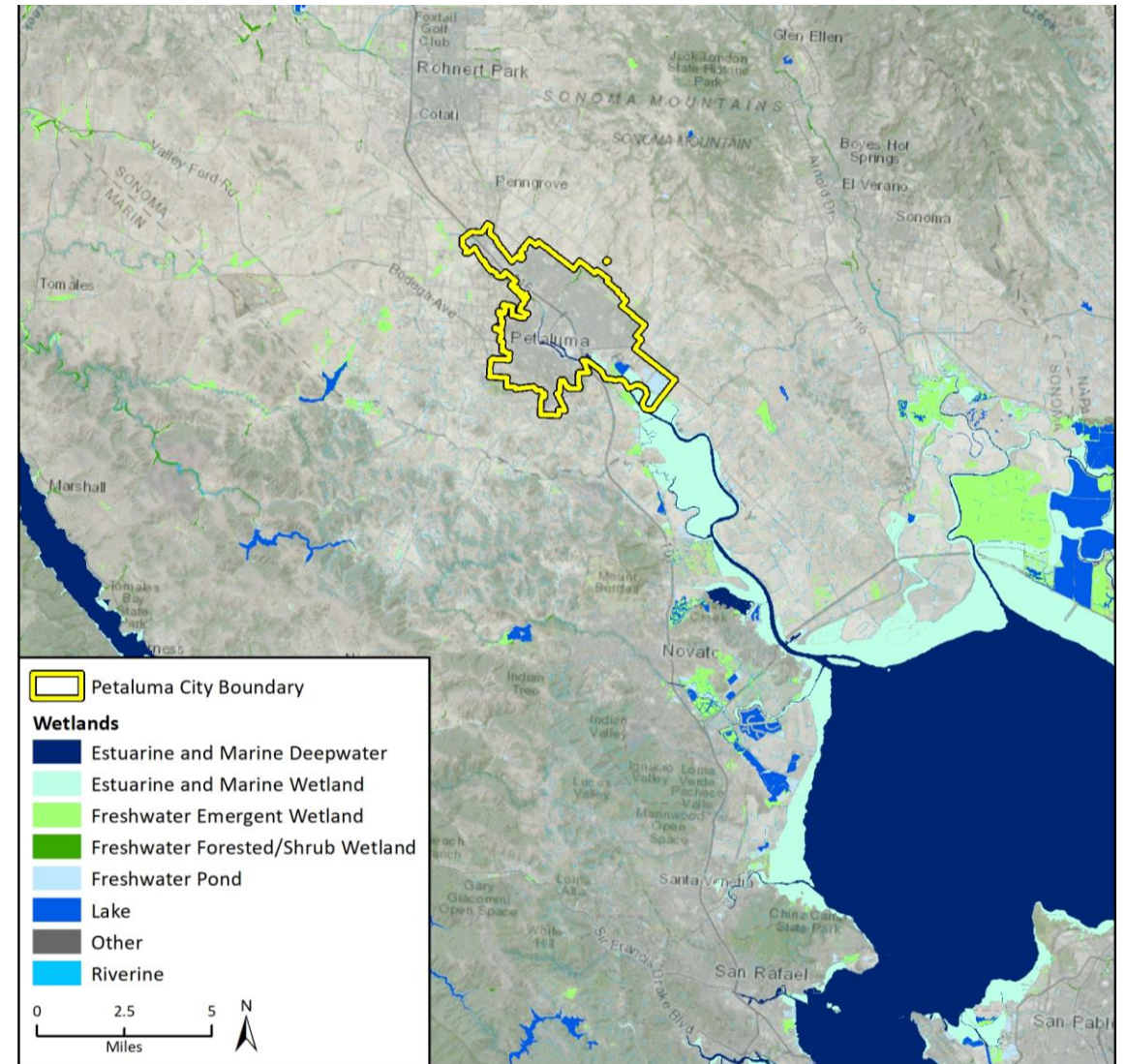
Key Findings

Native American Traditional Territory

- Prior to European settlement in present-day Sonoma County, the region was inhabited by the Coast Miwok, who made their home in the areas known today as Marin County and southern Sonoma County.
- One of the Coast Miwok villages was named “Péta Lúuma” and was located to the east of current day Petaluma and the Petaluma River. “Péta Lúuma” was adapted to “Petaluma” by the Spanish and was the name given to the Rancho Petaluma land grant in 1834.

Biological Resources

- Petaluma has numerous biological resources that are subject to federal and state regulations and that shape planning decisions.
- Wetlands provide critical habitat and flood risk reduction from severe weather and sea-level rise
- Sonoma Valley Wildlife Corridor Project led by the Sonoma Land Trust to protect critical movement corridors for wildlife is adjacent to Petaluma

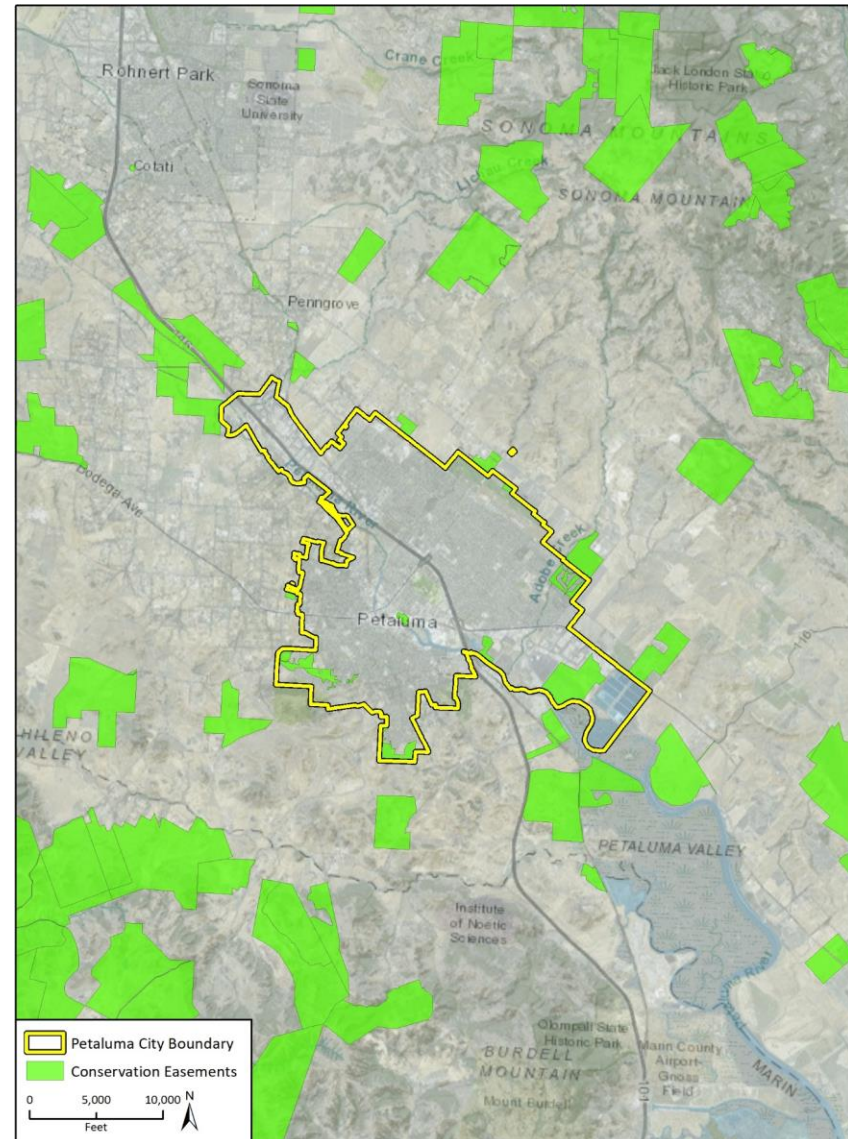


Imagery provided by Esri and its licensors © 2021.
Additional data provided by Sonoma County, 2021.

Fig. 10-3 Surrounding Wetlands

Natural Resource Areas

- The City has open space and parks managed by other agencies.
 - Petaluma Adobe State Historic Park - California State Parks Department
 - Helen Putnam Regional Park - Sonoma County Regional Parks
- Several **conservation easements surround the city's vicinity.**



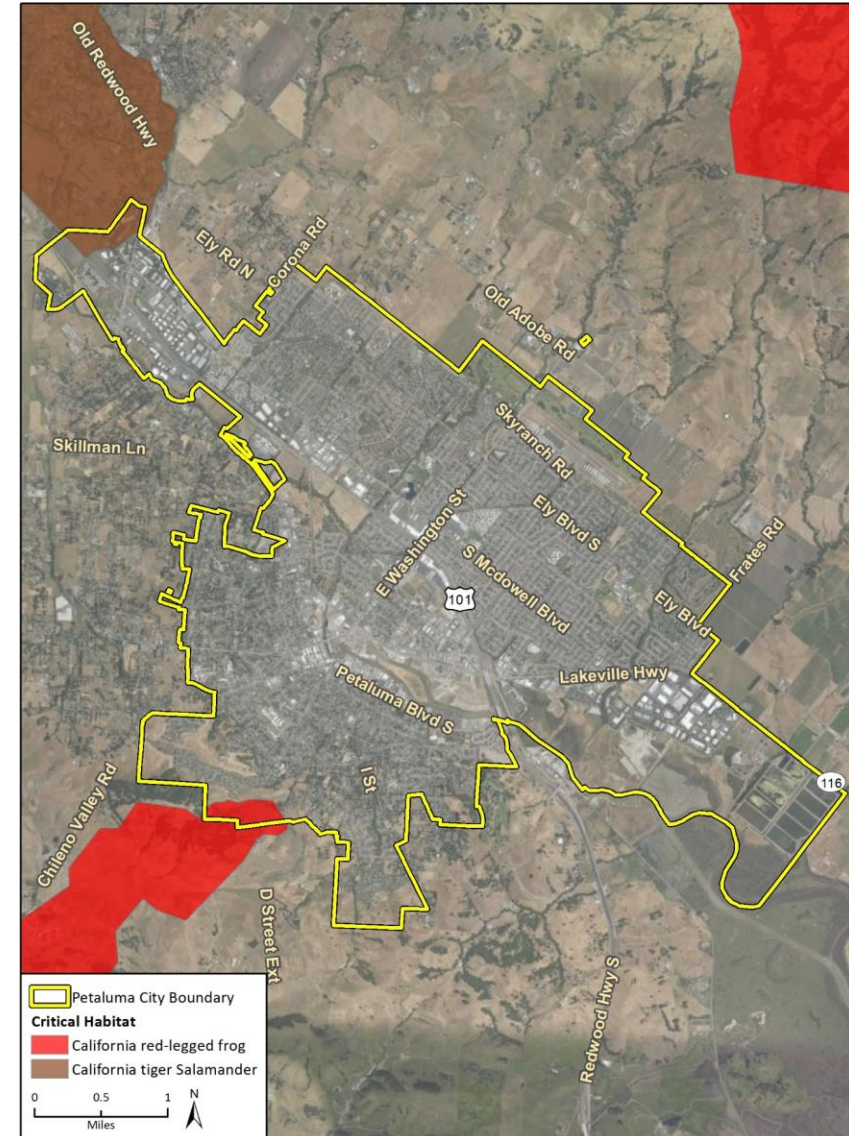
Imagery provided by Esri and its licensors © 2021.
Additional data provided by CCEd, 2019.

Petaluma River and Tributaries

- The California Environmental Protection Agency and the San Francisco Bay RWQCB list existing beneficial uses for the:
 - Petaluma River,
 - Willow Brook Creek, and
 - Adobe Creek
- Existing beneficial uses for the Petaluma River include:
 - cold & warm freshwater habitat,
 - marine & wildlife habitat,
 - fish migration & spawning,
 - navigation,
 - preservation of rare and endangered species, and
 - contact & noncontact water recreation.

Special-Status Species

- Petaluma is home to several special-status plant and animal species.
- **13 special-status plant and animal species** historically located within the area
- Valuable habitat for these species include the **Petaluma River and its tributaries** and **grassland and oak savannah** to the west.



Imagery provided by Microsoft Bing and its licensors © 2021.
Additional data provided by USFWS, 2020.

Fig. 10.1 Critical Habitat

Important City Policies, Plans, and Programs

- **Petaluma Groundwater Sustainability Program:** a 20-year plan to ensure sustainable groundwater management practices
- **Petaluma River Access and Enhancement Plan:** developed by the City of Petaluma to improve access and character of the Petaluma River
- **Landscape Assessment Districts (LADs):** requires the City to fund maintenance and amenities on public lands for all new subdivisions
- **Adobe Creek Restoration Plan and Management Program:** developed by the City of Petaluma and SCWA to enhance, restore, and manage Adobe Creek

Community Direction

Vision and Pillars

Petaluma is a vibrant river town rooted in the relationship between our people and the land.

We acknowledge that Petaluma is the traditional territory and unceded lands of the Coast Miwok peoples. We appreciate that our name springs from those tribes who first called this land home. Our identity also evolves from our deep **agricultural roots**, historic downtown, **living river**, and **preserved open spaces**. We honor this legacy to celebrate, protect, and restore our **natural landscapes and habitats** both within and outside our community. Together, we sustain a **resilient ecosystem** for humans, wildlife, and the earth.

We relish our spirited, distinctive neighborhoods where we live, work, and play.

We enjoy **active**, animated communities throughout our city along with an **energetic historic downtown**. Our friendly, **beautiful**, and **nature-filled streets**, parks, **urban forest**, and **accessible river**, bike lanes and **trails**, and walking paths connect people and help keep residents **healthy**. It is safe, easy, and enjoyable to travel across and around town and to neighboring communities with human, electric, and hybrid transport.

We are forward-thinking leaders.

By achieving **carbon neutrality in 2030**, we demonstrate that equitable, carbon-neutral, **regenerative communities and economies** are possible through action and **collaboration** with other cities, communities, and our **region**. We have **adapted** to climate change with a **community-driven, whole systems**, and **nature-based** approach to development.

Geographic Context and Sense of Place.

Petaluma is distinguished by its topography, **watersheds**, coastal climate, **surrounding greenbelt**, and intact **oak and riparian habitats**. Petaluma's community character stems from its **agricultural heritage**, history as a **river town**, historic neighborhoods, legacy of growth management, **sense of community**, and engaged and **forward-thinking** population. The General Plan must preserve Petaluma's distinctive **sense of place**.

Guiding Principles

Preserve and enhance Petaluma's **natural environment** and surrounding open spaces.

- Protect the natural environment, including wildlife corridors, as the foundation of ecological and human health.
- Preserve Petaluma's identity, image, and sense of place that result from its relationship to natural features – the River, Sonoma Mountain, the hills, the creeks, grassland, wetland and marshland.
- Maintain the land outside the Urban Growth Boundary for open space, wildlife habitat and movement, agriculture, rural land uses, and protection from hazards.
- Expand open spaces within and adjacent to the city.
- Ensure the natural and built environment is resilient to flooding, fires, sea level rise, and other natural hazards.
- Ensure equitable access to and enjoyment of Petaluma's natural environment.
- Advance urban forest management and native plantings.
- Increase the urban tree canopy.

Guiding Principles

Protect and restore the **natural function** of the Petaluma River and its tributaries while **expanding complementary recreational, entertainment, and civic opportunities**.

- Restore the beauty and natural function of the Petaluma River.
- Maintain and expand setbacks from the river to enhance its natural function and provide wildlife corridors.
- Expand connectivity to, along, and across the river, including restoration of the trestle.
- Orient development to both protect and connect to the river.
- Update and then implement the Petaluma River Access and Enhancement Plan.

Guiding Principles

Prioritize **infill development** in appropriate locations throughout the city.

- Avoid locating new development in environmentally sensitive and high-hazard locations.

Honor, celebrate, and preserve Petaluma's **heritage and historic character** and its place in the modern city.

- Celebrate the city's early history dating back to the Miwok People, who were the historic stewards of the land.
- Understand Petaluma's complete history and its people's diversity of stories.
- Celebrate the Petaluma River as the centerpiece of the City's ecology, heritage, and recreation.

Be a leader in advancing these guiding principles within the region and beyond.

- Continue to strategically partner and participate in collective solutions to advance regional and global issues.
- Lead by example.
- Encourage the exploration of "experimental" policies, ordinances, infrastructure.

GPAC Recommendations

Working Group Input

- **Tribal cultural resource preservation**
 - **Acknowledge prior inhabitants of our land and follow their long perspective**
 - **Acknowledge that our lifestyle and values have dramatically changed the landscape** that was nurtured by Indigenous Peoples and other species who lived here Europeans arrived
- **Ecological resource connectivity**
 - **Create more Open Space with more access**
 - **Remove unnecessary barriers to wildlife mobility**
 - **Trail connections and habitat connections**
- **Green Infrastructure**
 - **Promote rainwater harvesting** from rooftops and impervious surfaces
 - **Encourage installation and maintenance of green rooftops and water capturing systems.**

Working Group Input

- **Protection of wetlands and wildlands:**
 - Work with RCD, County, landowners, and other agencies for **reducing erosion, sediment, and trash in creeks and watersheds**
 - Domestic landscapes must be **symbiotic** with natural landscapes
 - **Prioritize “native” plants** when appropriate and when considering characteristics of the specific location.
 - **Protect the watershed** ecosystem
- **Biodiversity enhancement:**
 - **Increase tree canopies**, add trees along existing street and corridors
 - **Update Tree Ordinance**
 - Encourage planting of **ecologically beneficial plant** materials
 - Select and install **plant species to maximize potential environmental, ecological, social and aesthetic benefits**, such as: carbon sequestration, micro-climate control (wind, shade, glare), habitat creation, biodiversity support, heat island reduction, traffic calming, pedestrian protection, visual mitigation, etc.

Policy & Strategy Ideas

Natural Resources Proposed Goals

- Petaluma honors and protects its Native American heritage through community consultation and resource prioritization.
- Petaluma has an integrated and proactive approach to water resource management.
- Petaluma has a cohesive network of healthy, protected, and productive natural lands that facilitates the coexistence of people, animals, and plants.
- Biophilic landscaping connects and supports natural spaces and mitigates climate impacts.
- The City's Natural Resources interdepartmental staff working group effectively protects and supports the natural environment in Petaluma by overseeing General Plan policy implementation.

Natural Resource Proposed Goals

- Are there high-level goals we aren't covering that should be included?

Goal: Petaluma honors and protects its Native American heritage through community consultation and resource prioritization.



- **Partner** with Native American tribes within Sonoma County.
- Provide **educational materials** and opportunities to engage with local Native American heritage sites and history.
- Consider **culturally appropriate** and **feasible** approaches to **reparations**.

Goal: Petaluma honors and protects its Native American heritage through community consultation and resource prioritization.

Ways to accomplish this:

- Have Native American tribes guide management of natural and cultural resources of significance to local tribal partners.
- Conduct Native American consultation when new development is proposed in potentially culturally sensitive areas.

Did we capture the high-level strategies for this topic? Is there any major topic/strategy missing?

Goal: Petaluma has an integrated and proactive “OneWater” approach to water resource management.



- Develop a **Citizens Riverkeepers** program to monitor Petaluma River **water quality**.
- Improve signage along the Petaluma River to promote positive **stewardship**.
- **Empower landowners** to employ water capturing systems.

Goal: Petaluma has an integrated and proactive approach to water resource management.

Ways to accomplish this:

- Train and empower citizens to collect water quality samples that can support identification of bacterial contamination that would normally go undetected.
- Develop a City-sponsored educational program focused on informing residents about the value of the Petaluma River and strategies for preservation.
- Implement the strategies outlined in the Petaluma River Cleanup Plan.
- Develop a program focused on partnerships with local landowners to employ infrastructure on private lands that reduces runoff, including rainwater catchment systems and roof water harvesting and storage.



Did we capture the high-level strategies for this topic? Is there any major topic/strategy missing?

Goal: Petaluma has a cohesive network of healthy, protected, and productive natural lands that facilitates the coexistence of people, animals, and plants.

- **Support the connection** of open spaces, urban separators, and conservation easements to **create a greenbelt.**
- Expand the **urban forest** and **food forest** canopy throughout the city.
- **Natural solutions** to adapt to **heat extremes.**
- Use **transfer of development rights (TDR)** to add **open space** areas.
- Improve **habitat and trail connectivity** throughout the city.



Goal: Petaluma has a cohesive network of healthy, protected, and productive natural lands that facilitates the coexistence of people, animals, and plants.

Ways to accomplish this:

- Identify optimal locations based on environmental assets such as habitat type for connecting open spaces and conservation easements to create a greenbelt around the city.
- Protect new lands for conservation easements and open space purposes.
- Continue to seek new opportunities to conserve more open space
- Identify viable lots including vacant, parking, and other underdeveloped lots to be used as pocket parks for food forests and tree planting.
- Develop neighborhood-specific and ecologically informed vegetation and landscaping guidance to support an integrated ecological network.

Goal: Petaluma has a cohesive network of healthy, protected, and productive natural lands that facilitates the coexistence of people, animals, and plants.

Ways to accomplish this:

- Identify trails and open space networks that can be improved and expanded upon for increased access to green space and provide improved connections through the extension of wildlife corridors.
- Study the feasibility of a voluntary TDR program to promote infill development and preserve open space areas within the municipal code. If feasible:
 - Pair TDR with density bonus incentives for the receiving area.
 - Establish procedures for the permanent preservation of land, such as conservation easements, on the sending area.

Did we capture the high-level strategies for this topic? Is there any major topic/strategy missing?

Goal: Biophilic landscaping connects and supports natural spaces and mitigates climate impacts.

- Promote the use of **green walls** and **roofs**.
- **Prioritize native and drought tolerant** vegetation in landscaping and green infrastructure.
- Promote the use of **water capturing systems** for businesses.



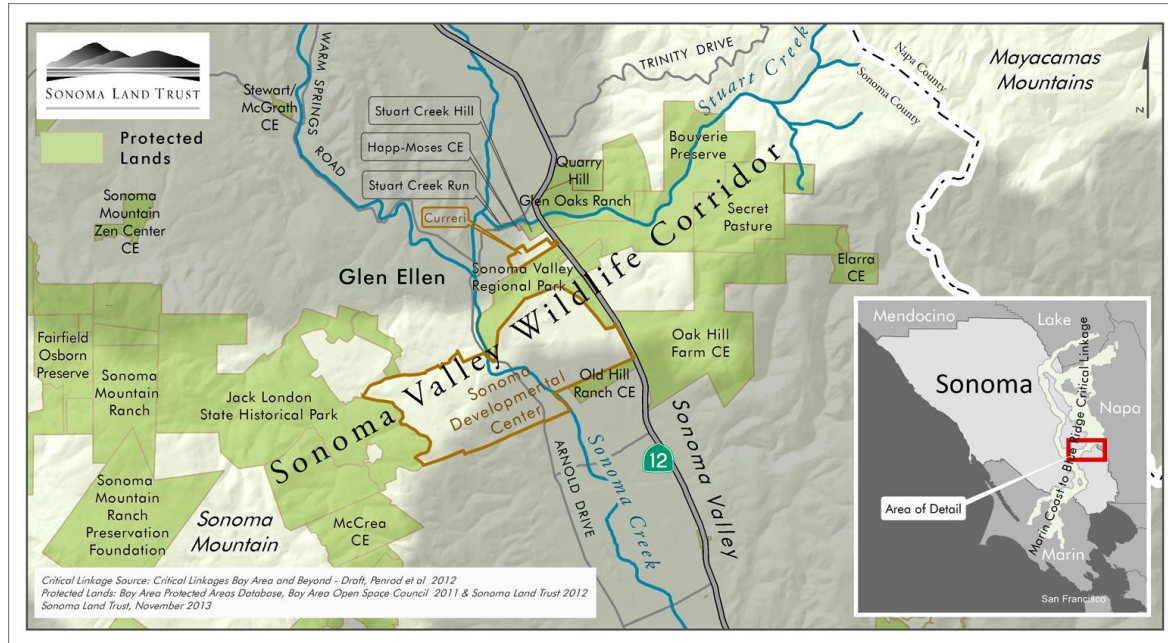
Goal: Biophilic landscaping connects and supports natural spaces and mitigates climate impacts.

Ways to accomplish this:

- Develop green walls on City facilities to increase public exposure through municipal demonstrations.
- Create a stormwater fee credit and a rebate program for property owners who install green walls or roofs based on the amount of impervious area covered.
- Develop design guidelines for green walls and roofs to minimize water needs and maximize green infrastructure benefits.
- Develop a robust list of native and climate-resilient species that are compatible with green walls and roofs.
- Update building code standards to allow for water capturing features including water storage containers and water capturing apparatus.

Did we capture the high-level strategies for this topic? Is there any major topic/strategy missing?

Goal: The City's Natural Resources interdepartmental staff working group effectively protects and supports the natural environment in Petaluma by overseeing General Plan policy implementation.



- Identify departments and **capacity** to contribute to the working group.
- Support the working group to **effectively carry out** and oversee **policy implementation**.
- Seek and work with community partners to **refine roles** and **responsibilities**.

Goal: The City's Natural Resources interdepartmental staff working group effectively protects and supports the natural environment in Petaluma by overseeing General Plan policy implementation.

Ways to accomplish this:

- Create a Natural Resources working group for the City that includes City staff from multiple related departments or divisions.
- Identify a budget to carry out intended roles and responsibilities of the Natural Resources working group.
- Develop community engagement strategies and programs to help the community engage with the new working group and achieve its goals.

Did we capture the high-level strategies for this topic? Is there any major topic/strategy missing?

Public Comments

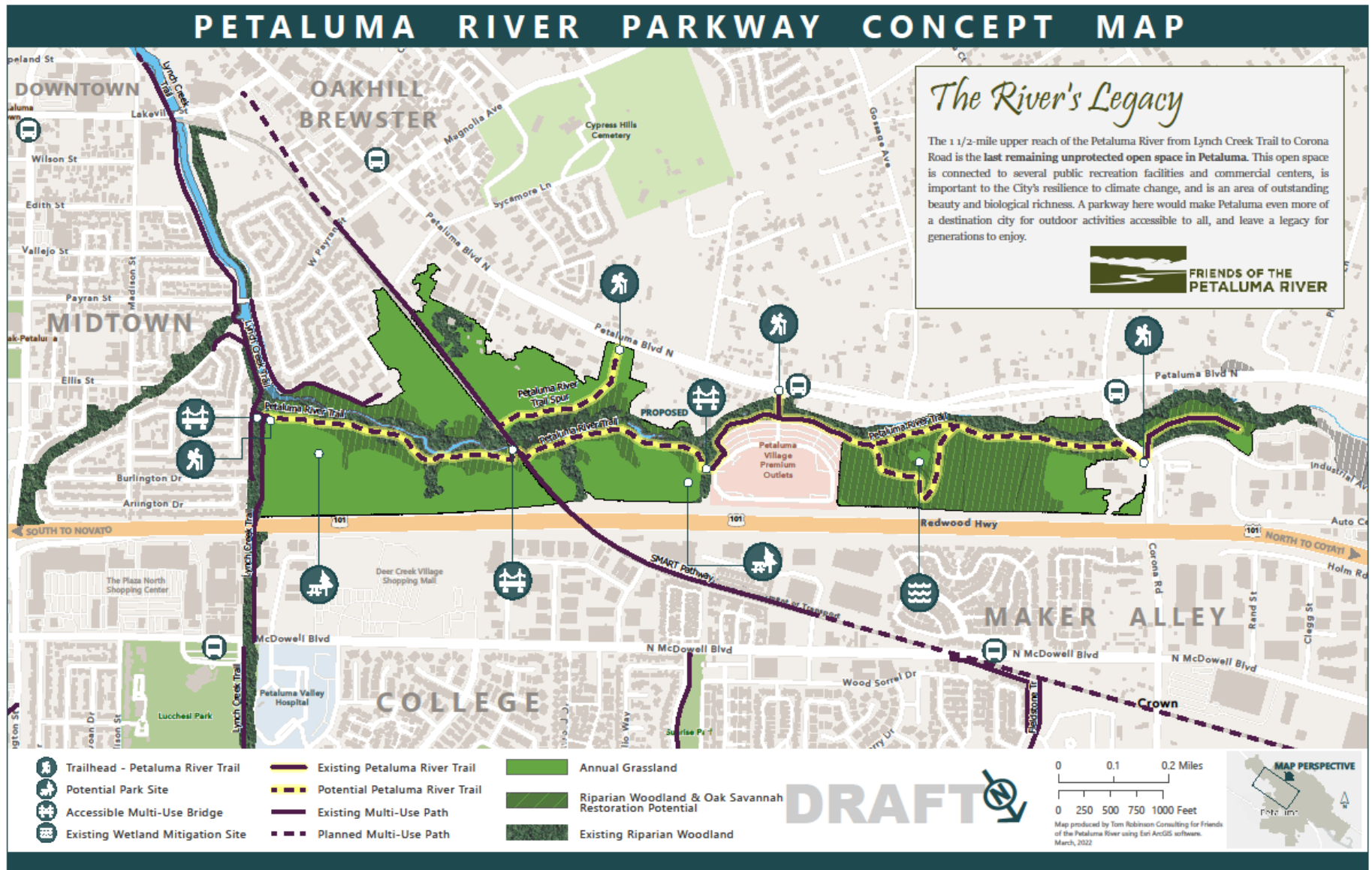
Discussion: Natural Resources Policy & Strategy Ideas

Natural Resources Discussion Questions/Topics

- Any last general responses to what was presented?
- If you could choose one large aspirational natural resources-oriented project for the City to focus on, what would it be?

Final GPAC Thoughts

Conceptual Plan by Friends of the Petaluma River



ReLeaf



ReLeaf is doing big things! Can you help us in a big way?

DONATE



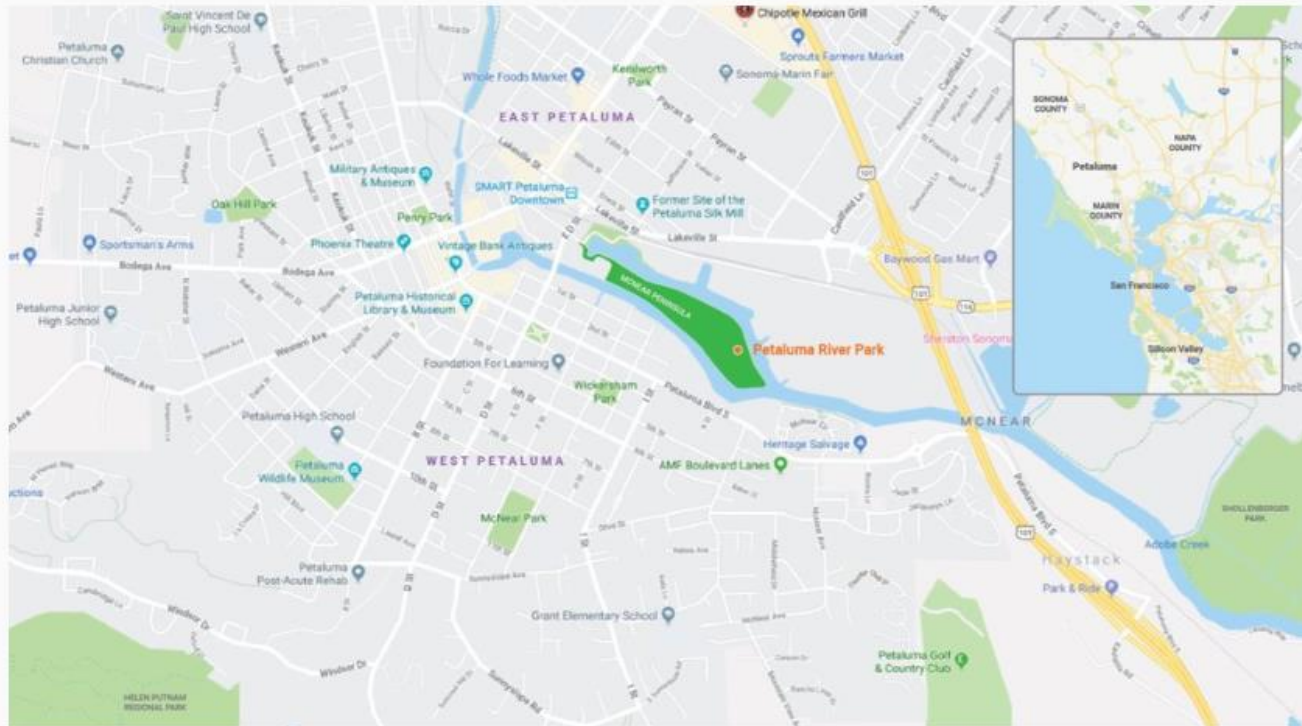
Ten Thousand Trees

A call to action to increase Petaluma's shade canopy by 10%

Petaluma River Park

A PLACE FOR EVERYONE

Our goal is to create an inclusive and vibrant outdoor place that enriches the lives of everyone in our community and revitalizes our river habitat. We have purchased 20 acres of wild waterfront property on the McNear Peninsula, surrounded by the Petaluma River. It is a rare piece of land in downtown Petaluma that will now be preserved and enjoyed by the public as a park.



THE PERFECT LOCATION

The park site inhabits the bulk of the McNear Peninsula along the Petaluma River, just off D Street through Haystack Landing. The acreage is adjacent to the land where the Friends of the Petaluma River have their headquarters. We look forward to working closely with them.

Petaluma River Park is near the SMART train station, several bus stops, and is within easy walking distance of downtown.