

General Plan Advisory Committee Meeting

December 15, 2022

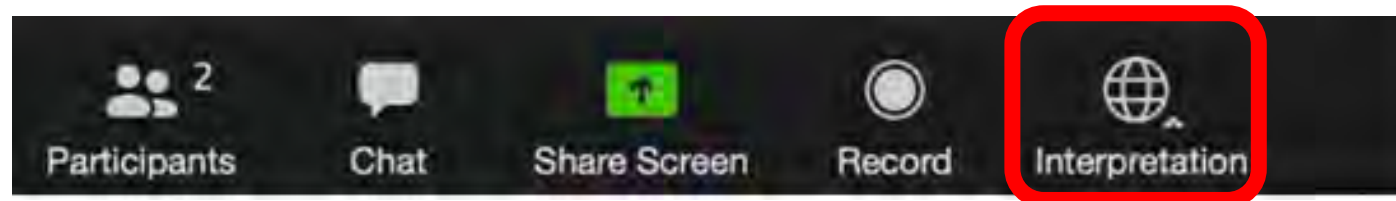
Zoom – La interpretación

- Interpretation

La interpretación en simultáneo para esta reunión se dará en los siguientes idiomas:

Español (Maria Galvez & Monica Aparicio) – bajo la opción Español

Por favor haz clic en el icono INTERPRETATION en tu barra de herramientas para acceder al idioma deseado

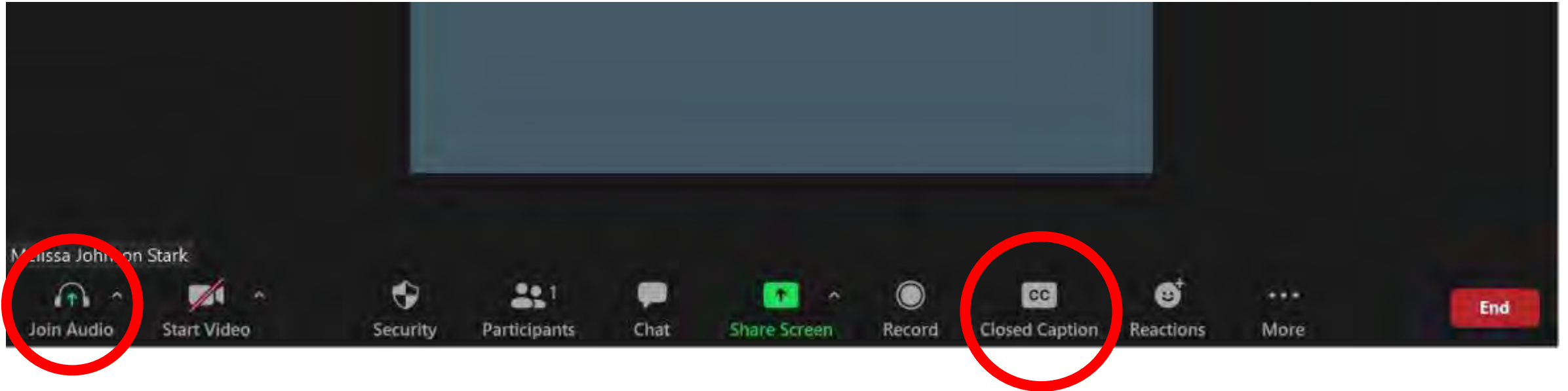


GPAC Roll Call

1. Dave Alden
2. Stephanie Blake
3. Phil Boyle
4. Erin Chmielewski
5. Mary Dooley
6. Sierra Downey
7. Jessie Feller
8. Ali Gaylord
9. Yensi Jacobo
10. Roger Leventhal
11. Iliana Inzunza Madrigal
12. Roberto Rosila Mares
13. Kris Rebillot
14. Bill Rinehart
15. John Shribbs
16. Joshua Riley Simmons
17. Janice Cader Thompson
18. Bill Wolpert

Logistics

Zoom Instructions

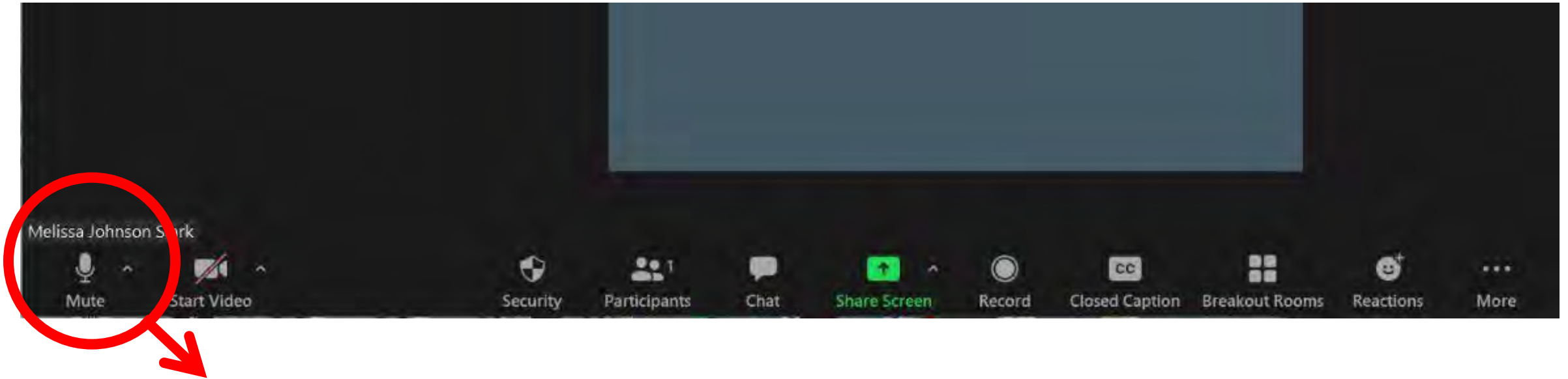


Join Audio

- Two options:
 - *Use your device's audio*
 - *Call in using a cell phone*

Closed Caption is available

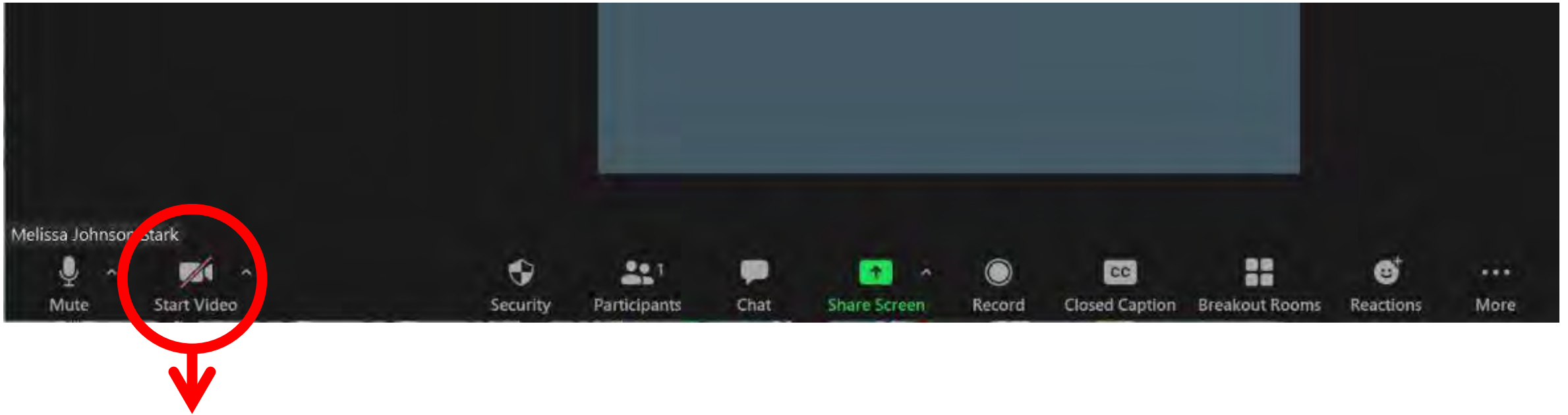
Zoom Instructions



Once Audio is Connected – Please Mute

- Please remain muted until it is your turn to speak
- To un-mute, press the same button

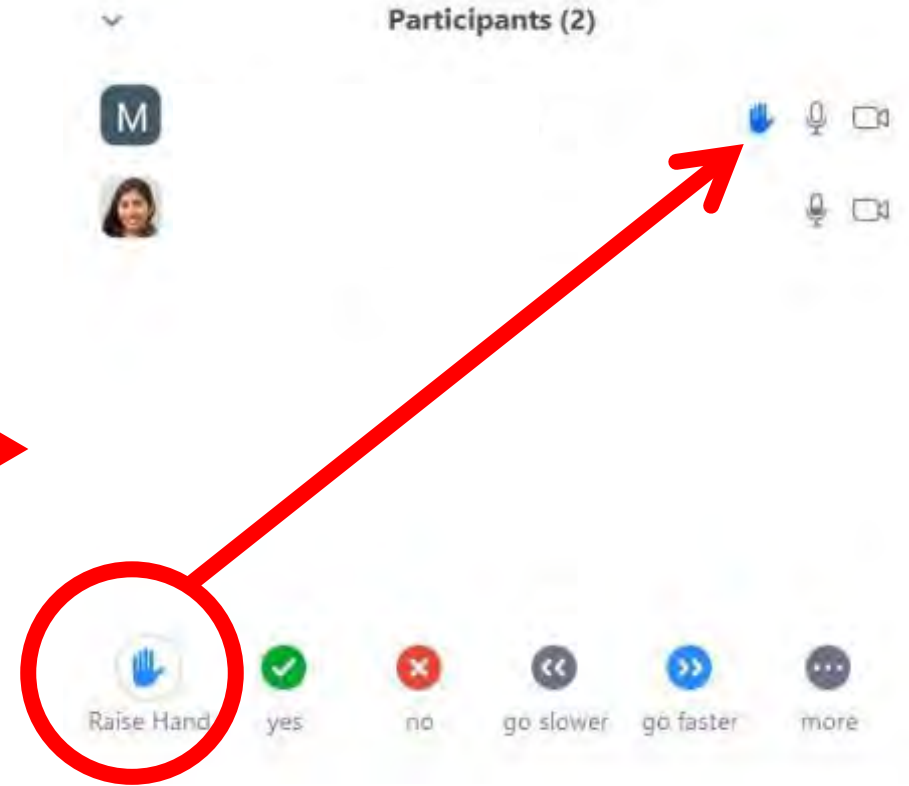
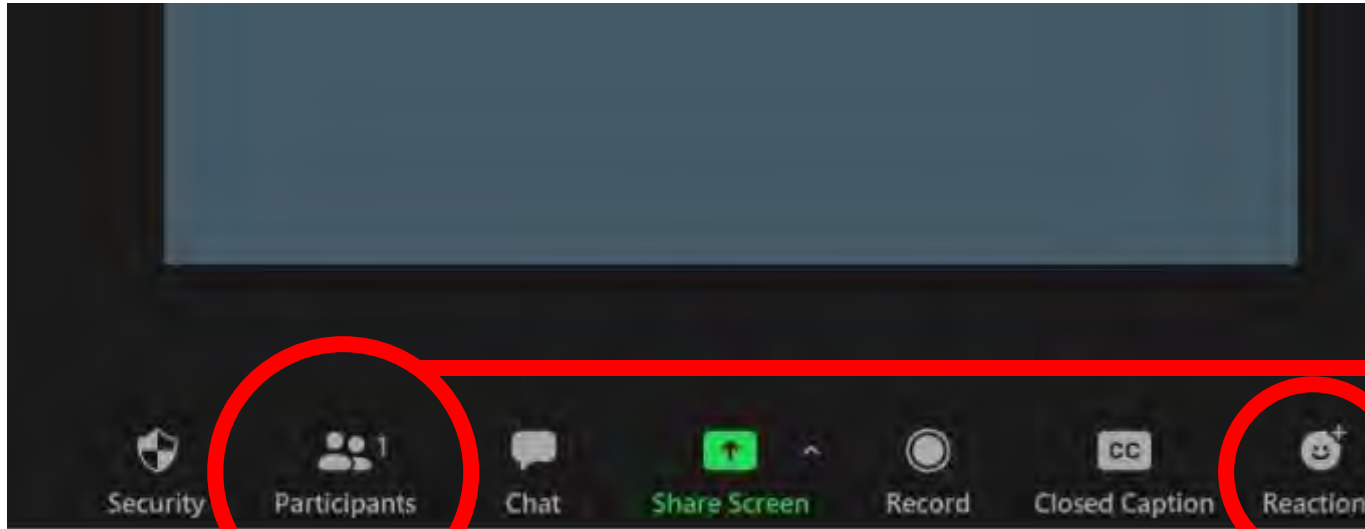
Zoom Instructions



Start Video (GPAC Only)

- **GPAC:** Please keep your camera on for the duration of the meeting
- **Public:** Please keep your camera off unless speaking during public comment

Zoom Instructions



Raise your “Hand” to Speak

- Please use the “Raise Hand” feature if you want to speak – the team will call on GPAC members individually. Please remain muted until called on.
- **Public:** Please only raise your hand during public comment. You can also use the **Q+A function** to send the Host questions during the meeting.

Zoom – What You Need To Know

For any technical difficulties, please email

Daniel Harrison at

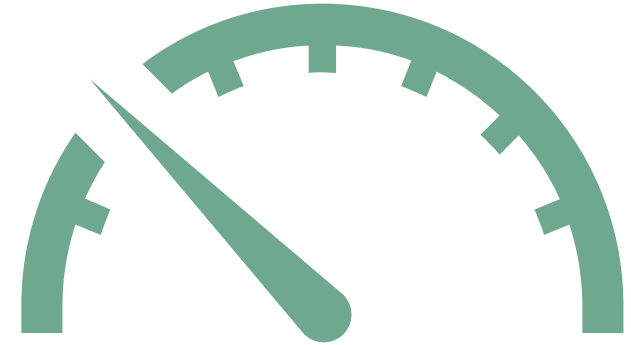
dharrison@cityofpetaluma.org

Para cualquier dificultad técnica, envíe un correo electrónico a Maria Galvez:

mapigalvez@gmail.com

Supporting Access and Live Interpretation

- Please remember to speak slowly given that our interpreters are working hard to translate accurately
- Reduce the use of Acronyms and make sure to explain them when you use



Meeting Overview

6:30pm: Roll Call and Logistics

6:40pm: General Public Comment

6:50pm: Project and Staff Updates

7:00pm: Health Equity and Environmental Justice Policy & Strategy Ideas

- Presentation
 - GPAC questions & check-ins throughout
- Public Comment
- GPAC wrap-up discussion

8:55pm: Final GPAC Thoughts

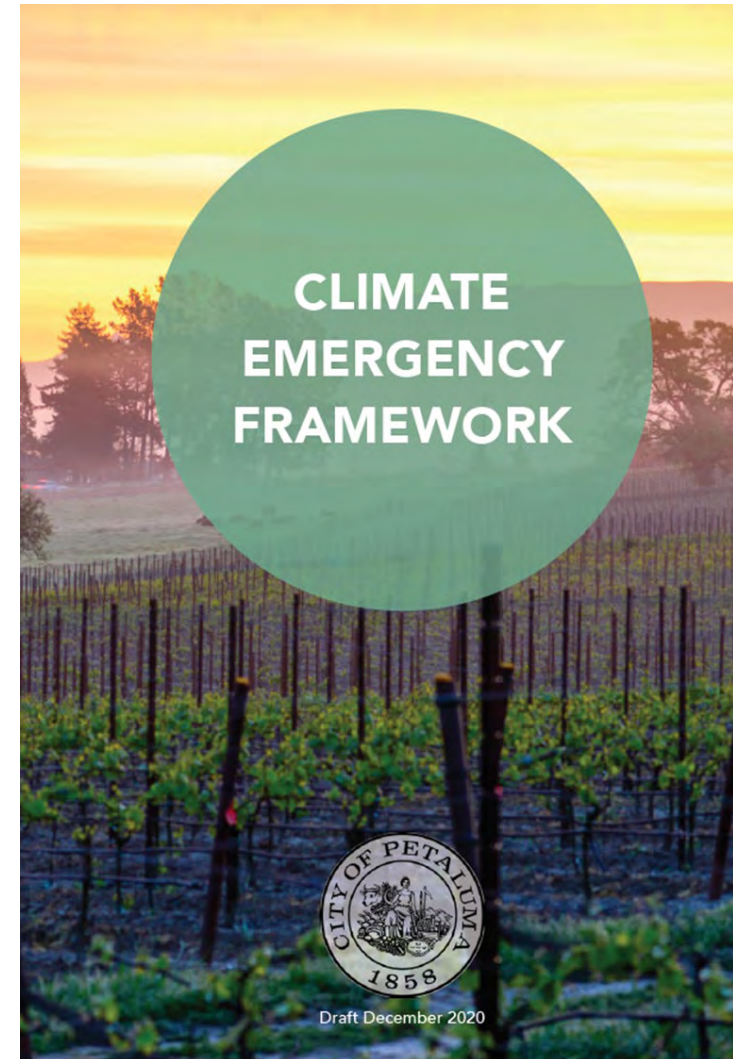


General Public Comment

Project & Staff Updates

Climate Action Planning

- **Now:** Staff working with Raimi to revise draft Greenhouse Gas reduction policies and timelines
- **Fall/Winter:** Engagement with CAC on administrative draft
- **Winter:** Public Draft
- Continue to align General Plan, VMT reductions, GHG Reduction Strategy, adaptation planning, and GP CEQA EIR



Mapping the River: Floodplain and Sea Level Rise

- **Now:** Staff working with Wood Consulting and Sherwood Engineers on draft model runs
- **Early 2023:** Discussion of updated mapping with the community



Other updates?

- Sign up for the Community Update and Meeting notices!
- **CityOfPetaluma.org/Subscribe**



PETALUMA
SONOMA COUNTY
CALIFORNIA-USA

HAGA CLIC AQUÍ PARA LEER ESTE CORREO ELECTRÓNICO EN ESPAÑOL

Community Update for October 19, 2022

Happy Wednesday, Petaluma!

Halloween is right around the corner and we love seeing our community getting into the fall spirit with festivities and decorations! As more holidays quickly approach, make sure to mark your calendars for local events and happenings the whole family will enjoy. You can see a full list of upcoming activities by visiting: [visitpetaluma.org/events](https://www.visitpetaluma.org/events).

This evening, we're sharing an update from the fire department, opportunities to weigh in on multiple City projects, and much more. Please enjoy, share with your friends, and have a wonderful evening. We'll see you in your inbox next Wednesday!



GPAC Membership

- Thank you for nearly 2 years of service!!
 - Your contributions have been huge!
 - We hope that you will continue with us through plan adoption
 - We acknowledge that you have put in significant service to the community and life changes- we will be looking for confirmation that current members would like to keep serving
 - Meetings will continue to be virtual (unless desired for a special workshop)
- Looking at filling vacant seats January 23, 2023
 - Membership has transitioned as folks move and join Council
 - Application Process



6th Cycle Housing Element

- 45 Day: Have requested a 45-day review (half way through 90-day HCD review)
- January 26: HCD initial review period loses
- February 14: Planning Commission Update
- March 16: GPAC Update
- February 27: City Council Update
- March 14: Planning Commission review
- March 20: Council consideration for adoption
- March 31: Final due date to HCD



Fall 2022-Winter 2023

- November-January: HCD review of Housing Element
- January 2022: GPAC appointments
- Fall 2022: Draft Climate Action Plans
- Fall 2022 – Winter 2023: Draft General Plan Policy Frameworks and Alternatives
 - October, November, December, and future GPAC Discussions
- Winter 2023: GPAC and Department Discussion of Policy Frameworks and Alternatives
- Spring 2023: Topic- and Area-Focused Community Meetings



Clarifying Questions from GPAC Members

General Plan Policy & Strategy Ideas

Policy Frameworks

- Purpose: outline the proposed General Plan goals, policies, and implementation actions for each element of the General Plan
- Next incremental planning step that follows:
 - Existing conditions
 - Community vision, pillars, and principles
 - Recent strategy meetings
- Lay the groundwork for the next step in the planning process – the Administrative Draft General Plan



Health Equity and Environmental Justice

Presentation Overview

Health Equity and Environmental Justice

- Existing Conditions
- Community Direction
- Policy & Strategy Ideas



General Plan Requirements

California's **Senate Bill 1000** (SB 1000), or the Planning for Healthy Communities Act, was signed into law in 2016. It requires jurisdictions with disadvantaged communities to develop either

1. an environmental justice (EJ) element, or
2. integrate related EJ goals, policies, and programs into other elements of their general plan.

According to California's Health and Safety Code (Section 39711), a "disadvantaged community" (DAC) is defined as "a low-income area that is disproportionately affected by environmental pollution and other hazards that can lead to negative health effects, exposure, or environmental degradation".

Low-Income



High Pollution and
Health Burden



"Disadvantaged
Community"

Environmental Justice Element (SB 1000)

If a jurisdiction is subject to SB 1000, then their General Plan must include goals, policies, and actions that:

1. **Reduce unique and compounded health risks** in disadvantaged communities
2. **Promote civic engagement** in the public decision-making process
3. **Identify objectives and policies** that prioritize improvements **that address the needs of disadvantaged communities**

SB 1000 also specifies that six topic areas must be addressed in the EJ Element or through integrated EJ goals, policies, or actions in other chapters of the General Plan:

Reduce Pollution Exposure, including Air Quality Improvement

Promote Public Facilities

Promote Food Access

Promote Safe and Sanitary Homes

Promote Physical Activity

Promote Civic Engagement

Existing Conditions

Key Findings

Note on Terminology

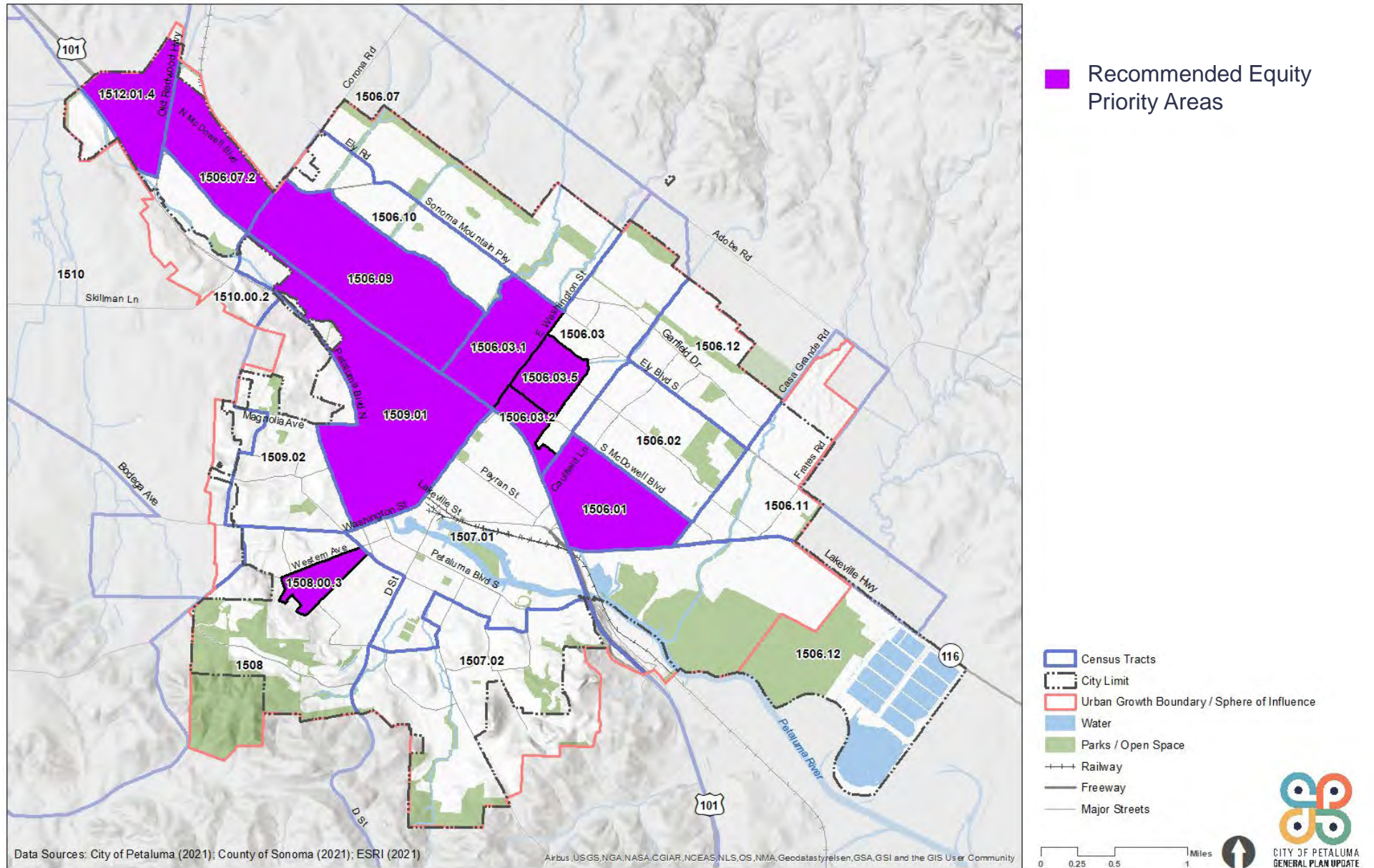
- The 2021 Existing Conditions Report used the term identified by the State: “Disadvantaged Communities”.
- Moving forward, based on community input and evolving guidance from the Office of the Attorney General, the General Plan Update is tentatively using the term “Equity Priority Areas”.

Recommended Equity Priority Areas

Based on the existing conditions report in 2021, there are 9 areas that are recommended as Equity Priority Areas for the EJ Element:

- 1506.01
- 1506.09
- 1509.01
- 1506.03, Block Group 1
- 1506.03, Block Group 2
- 1506.03, Block Group 5
- 1506.07, Block Group 2
- 1508.00, Block Group 3
- 1512.01, Block Group 4

The following page provides a summary of the health and environmental burdens in each of these recommended Equity Priority Areas.



Summary of Health & EJ Burdens

There are multiple health and environmental burdens within Petaluma’s Equity Priority Areas. The three most prevalent burdens are: highway-related air pollution, low proximity to high-frequency transit, and traffic impacts. Within Petaluma, census tract 1506.09 in the city’s Northeast and North MacDowell Blvd subareas is particularly burdened.

			Recommended DACs								
			Tract 1506.01	Tract 1506.09	Tract 1509.01	1506.03 BG 1	1506.03 BG 2	1506.03 BG 5	1506.07 BG 2	1508.00 BG 3	1512.01 BG 4
Health and Environmental Burdens	Method 2	Traffic Impacts	High	High	High	Low	Low	Low	Low	Low	Low
		Groundwater Threats	Low	Low	High	Low	Low	Low	Low	Low	Low
		Solid Waste Sites	Low	High	Low	Low	Low	Low	Low	Low	Low
		Diesel PM	Low	High	Low	Low	Low	Low	Low	Low	Low
	Method 3	Low Life Expectancy	Low	High	Low	Low	Low	Low	Low	High	Low
		Highway-related Air Pollution	High	High	High	High	High	Low	High	Low	High
		Low Active Commuting Rates	Low	High	Low	Low	Low	Low	Low	Low	Low
		Low Proximity to High-Frequency Transit	High	High	Low	High	High	High	High	Low	High

Existing Efforts

The City (and the existing GP) is already doing a lot within the SB 1000 topic areas. Below are a few example items to consider carrying over into the new GP:

Reduce Pollution Exposure

- Prohibit new fossil fuel gas stations and transition existing stations to serve Zero Emission Vehicles
- Promote ride-sharing and car-sharing programs
- Promote use of alternatives to the automobile for transportation, including walking, bicycling, bus transit, and carpooling

Promote Safe and Sanitary Homes

- Promote the maintenance of existing residential units. Coordinate with the City's Code Enforcement staff to identify unsound or deteriorating housing conditions for possible rehabilitation.
- Preserve the affordability of the City's existing affordable housing stock

Promote Public Facilities

- Develop and implement a Parks Master Plan
- The City also seeks to expand access to education for all young children by providing low-cost preschool programming.
- Maintain and expand the Teen Center facilities and programs

Promote Food Access

- Prohibit new drive-thru food and service facilities
- The City works with Sonoma County to provide CalFresh recipients with a dollar-for-dollar match (up to \$20) when they purchase fruits and vegetables at local farmers' markets.

Promote Physical Activity

- Establish a network of multi-use trails to facilitate safe and off-street bicycle and pedestrian travel
- Fund and perform regular maintenance on all public bicycle and pedestrian facilities
- Promote bicycling and pedestrian safety and increased use of non-motorized transportation alternatives.

Promote Civic Engagement

- (see next slide on City's Equity Initiatives)

Petaluma's Equity Initiatives

The City of Petaluma is currently involved in advancing equity in a variety of ways. Some recent initiatives are:

- Citywide districting
- LGBTQ+ celebration crosswalk
- Downtown Streets Team
- Healthy Democracy initiative
- Tenants' Rights Initiatives
- Black Lives Matter art installation
- Climate Action Framework
- Ad Hoc Community Advisory Committee
- Various Police Department programs: Community policing model, Mobile crisis intervention team, and trainings on de-escalation, implicit bias, and diversity, equity, and inclusion
- Equity will also be woven through the General Plan Update work



Sources: City of Petaluma

Community Direction

Vision Statement for Petaluma in 2045

We are caring and connected.

We celebrate our differences by providing **inclusive** community spaces for the diverse people that form Petaluma and by cultivating a sense of **belonging**. We welcome newcomers seeking refuge, a place to call home, and new opportunity. Our engaged residents and local government ensure **equity, livability, opportunity, and access for all residents**. We embrace each other's cultures, lift each other up, and move forward together.

We invest in each other.

We are a community where children and youth thrive, families in all forms are supported, and our elders flourish as they age in place. We provide plentiful and varied housing choices, convenient access to **healthy local food**, and an educational system that builds leaders. We support all residents with **accessible city services**.

We relish our spirited, distinctive neighborhoods where we live, work, and play.

We enjoy **active, animated communities** throughout our city along with an energetic historic downtown. Our friendly, beautiful, and nature-filled streets, parks, urban forest, and accessible river, bike lanes and trails, and walking paths connect people and **help keep residents healthy**. It is safe, easy, and enjoyable to travel across and around town and to neighboring communities with human, electric, and hybrid transport.

We are forward-thinking leaders.

By achieving carbon neutrality in 2030, we demonstrate that **equitable, carbon-neutral, regenerative communities** and economies are possible through action and collaboration with other cities, communities, and our region. We have adapted to climate change with a **community-driven**, whole systems, and nature-based approach to development.

General Plan Pillars

Equity, Justice and Demographic Changes

Current demographic trends indicate that Petaluma will have an older, more diverse population well into the future. Petaluma **commits to advancing social and economic justice to create an inclusive and equitable city** in which all can thrive. The General Plan must **prioritize supporting those who have been most affected by injustice and inequity** and advances bold action in terms of housing, transportation, public spaces and intergenerational and multi-cultural programs in order to take advantage of opportunities and meet challenges as they arise.

Participatory Decision-Making and Government Transparency

Success in these endeavors will depend on an engaged community that participates in decision making and a **government that is open and transparent**. The General Plan must **reflect the perspectives of Petaluma's diverse population**, ensuring that opportunities to engage in public dialogue are accessible to all and setting the stage to address and solve future challenges with integrity, creativity and collaboration.

Climate Action, Resilience, and Sustainability

Petaluma is committed to bold action to achieve carbon neutrality by 2030 and to building resilience to climate change impacts, including sea level rise, **increasing temperatures, drought, and wildfire intensity**. The General Plan must build **climate-ready communities** using science, technology, and bold ways of thinking to advance change in our relationship with the natural environment and to plan for current and future impacts.

Guiding Principles

4. Promote social and economic justice to address structural social and economic inequities and racism.
5. Ensure the health and wellness of all residents.
6. Physically and psychologically integrate and connect the East and West sides of town.
7. Create a welcoming, affordable, accessible, and age- and family-friendly city.
12. Prioritize cycling, walking, transit, and other transportation alternatives over automobiles.



Equity and Intersectional Justice

GPAC Working Group Input

- **Work with Sonoma County's Equity Office** for resources and support in community engagement and strategic communications.
- Create a **City equity task force** and look for funding to **hire an engagement coordinator** as part of the City's staff.
- Make a **robust plan to engage underserved communities** in schools, organizations, and non-profits, spearheaded by the engagement coordinator.
- **Create more connections** between the city, community organizations, and businesses in order to see shared ownership of community initiatives.
- **Expand the bilingual and non-English language access** at City meetings, services, and online.
- Build on the existing connections with community organizations and leaders and **take strong action in bringing diverse voices** into the process.
- **Expand transit services** to create schedules that benefit our working class and most vulnerable populations.
- Establish **greater landlord oversight.**

Community Input Themes

- Expand urban agriculture
- Equitable access to trees and natural spaces
- Improve language access
- Expand transit services
- Expand mental health services
- Meaningfully engage with the Coast Miwok community
- Support residents with adapting to climate impacts



Source: Argus-Courier



Q&A

Policy & Strategy Ideas

Policy & Strategy

Ideas: Caveat ⁺ ○ •

All the ideas in this presentation are preliminary ideas. This initial GPAC review will be followed by iterative refinement including additional staff review, review with GPAC Working Groups, decision maker discussion and community meetings.

Health Equity and EJ Proposed Goals

- **Goal 1:** Petaluma is a leader in incorporating **equity considerations into government practices.**
- **Goal 2:** Petaluma proactively **partners** with local agencies, jurisdictions, community-based organizations, and other stakeholders **to advance equity and reduce health disparities.**
- **Goal 3:** Petaluma neighborhoods, especially Equity Priority Areas, have **reduced exposure to air pollution and wildfire smoke.**
- **Goal 4:** Petaluma **equitably provides public services and facilities** for all residents.
- **Goal 5:** Petaluma promotes **healthy eating** and **reduces food insecurity** among low-income residents.
- **Goal 6:** Low-income residents have access to **safe and sanitary housing and shelter.**
- **Goal 7:** Residents, of all incomes and abilities, have **opportunities to lead active lifestyles.**
- **Goal 8:** Residents from across the city are **engaged in decisions that impact their lives.**

Health Equity and EJ Proposed Goals

- **Goal 1:** Equity considerations in government practices.
- **Goal 2:** Partnerships to advance equity and reduce health disparities.
- **Goal 3:** Reduced exposure to air pollution.
- **Goal 4:** Equitable public services and facilities.
- **Goal 5:** Healthy eating and reduced food insecurity.
- **Goal 6:** Safe and sanitary housing and shelter.
- **Goal 7:** Opportunities to lead active lifestyles.
- **Goal 8:** Residents engaged in decisions that impact their lives.

**SB 1000 required
topic areas**

Today's Topics

- **Goal 1:** Equity considerations in government practices.
- **Goal 2:** Partnerships to advance equity and reduce health disparities.
- **Goal 3:** Reduced exposure to air pollution.
- **Goal 4:** Equitable public services and facilities.
- **Goal 5:** Healthy eating and reduced food insecurity.
- **Goal 6:** Safe and sanitary housing and shelter.
- **Goal 7:** Opportunities to have active lifestyles.
- **Goal 8:** Residents engaged in decisions that impact their lives.



Significant overlap with Housing Element discussion, so we won't cover in depth today



Significant overlap with Mobility and Parks & Rec elements discussions, so we won't cover in depth today

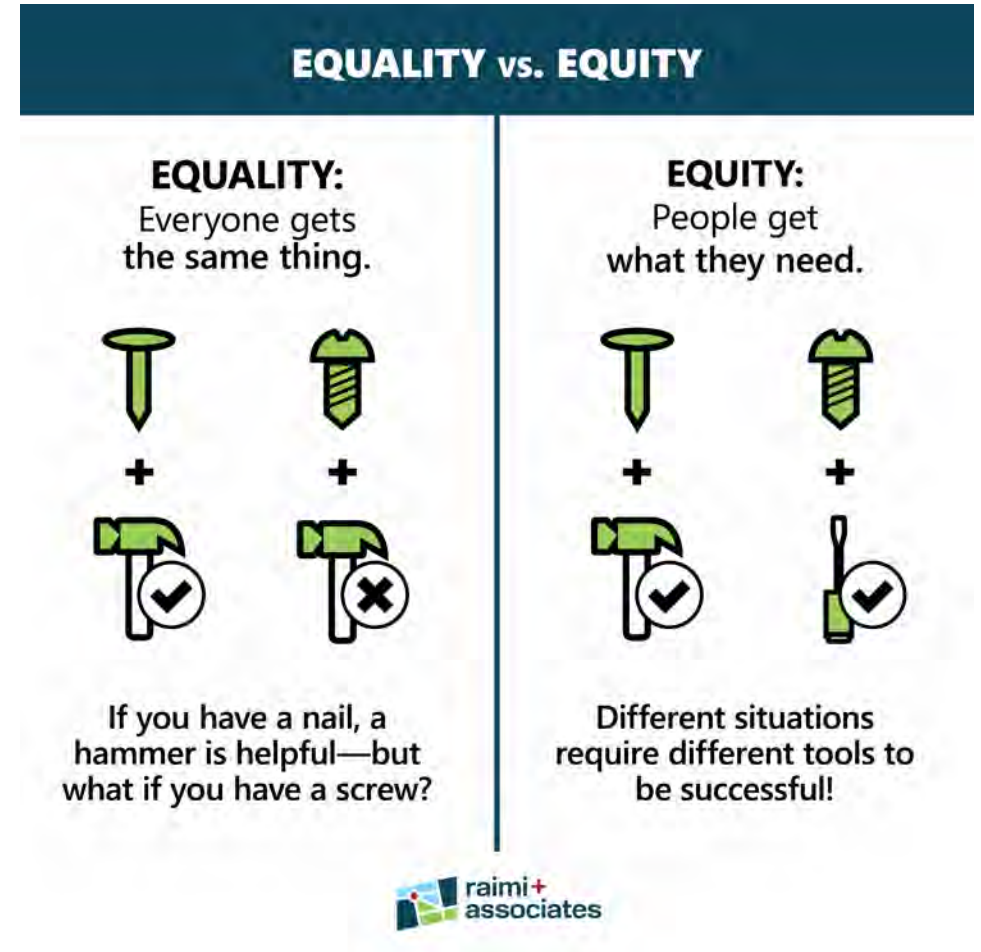
Questions to Keep in Mind

What are your thoughts on the proposed policies and actions?

Is there anything you would like to add?

Goal 1: Petaluma is a leader in incorporating equity considerations into government practices.

- **Policy 1.1:** Increase the City's **internal organizational capacity** to advance racial and social equity.
- **Policy 1.2:** **Institutionalize equity** by identifying opportunities to increase racial and social equity in internal and external practices, programs, and policies.
- **Policy 1.3:** **Enhance accessibility** to City services, resources, and processes.
- **Policy 1.4:** **Distribute** community resources, investments, and benefits **equitably** across the city.



Goal 1: Petaluma is a leader in incorporating equity considerations into government practices.

Implementation actions to accomplish this goal and policies:

- **1.1 City's internal capacity**

- a) Maintain a **staff position** (e.g., an Equity and Inclusion Officer) to institutionalize accountability, advance equity initiatives, and monitor equity-related outcomes throughout Petaluma.
- b) Create a **Governing for Racial Equity training** and require that City staff from all departments take part in capacity building trainings to equip them to understand and apply a racial equity lens in their day-to-day work.
- c) Join the **Government Alliance on Race and Equity** or a similar national network to gain access to resources to increase the City's capacity to advance racial and social equity.

- **1.2 Institutionalize equity**

- a) Develop a **standardized equity impact assessment tool** for use in City decision-making, including when the City Council is considering new policies and ordinances.

Goal 1: Petaluma is a leader in incorporating equity considerations into government practices.

Implementation actions to accomplish this goal and policies:

- **1.3 Enhance accessibility**

- a) **Evaluate the literacy level of existing public-facing City documents and permits.** Identify areas for improvement, especially in the process for applying to City programs and services, so that residents with lower literacy levels can more easily complete required documents.
- b) **Minimize the documentation required** (e.g., driver's license, lease, pay stubs) to access City services to reduce barriers to seeking and utilizing services, including eliminating requirements whenever possible.
- c) **Translate all City documents for applying to City programs and services** into Spanish and other locally relevant languages.
- d) Require all City counters to **offer interpretation services** for residents when requested.

- **1.4 Distribute investments equitably**

- a) Develop a **community benefits agreement program** for major development projects, which may include affordable housing, job training funds, and/or local hiring to support Equity Priority Areas.
- b) Partner with local jurisdictions in Sonoma County to **explore establishing a regional public bank** as part of the pilot program in accordance with California Assembly Bill 857 (Chu & Santiago, 2019).

Goal 2: Petaluma proactively partners to advance equity and reduce health disparities.

- **Policy 2.1:** Develop meaningful collaborations with the Federated Indians of Graton Rancheria and the broader **Coast Miwok community**.
- **Policy 2.2:** Work closely with the County of Sonoma and other jurisdictions and stakeholders in Sonoma County to **advance regional health equity priorities** and to reduce health disparities.
- **Policy 2.3:** Maintain communication with **local healthcare systems** to ensure that adequate medical facilities and services are provided to meet the varying needs of the community. Support expansion of health care facilities to match the growing population and changing demographics of the community.
- **Policy 2.4: Enhance accessibility** to existing health and social services in the city.



Source: Argus-Courier

Goal 2: Petaluma proactively partners to advance equity and reduce health disparities.

Implementation actions to accomplish this goal and policies:

- **2.1 Indigenous governments**

- a) Explore the **return of City-owned parcels of land to Indigenous stewardship** through cultural conservation easements for natural resource restoration, cultural practices, public education, and related uses.
- b) In collaboration with the Coast Miwok community, **develop City public education materials on the history of colonization in Sonoma County.**

- **2.2 County Health Department**

- a) Work closely with Sonoma County Department of Health Services to **collect and evaluate data on key health metrics** to ensure the City has necessary equity and health-related data to guide decision-making.
- b) Partner with private and non-profit stakeholders to **develop recreational programs** for residents that **improve wellbeing and help reduce stress and mental health symptoms.**

Goal 2: Petaluma proactively partners to advance equity and reduce health disparities.

Implementation actions to accomplish this goal and policies:

• 2.3 Healthcare systems and providers

- a) Partner with local healthcare systems and service providers to support Medicare and Medi-Cal recipients in accessing **existing reimbursement programs for non-emergency medical transportation**.
- b) Partner with local healthcare systems, community colleges, and universities to **establish a behavioral health certificate program** that trains students to become certified behavioral health providers and help to address the long wait time in access to behavioral health services.
- c) Work closely **with local healthcare systems and providers to prepare their facilities in Petaluma for future extreme weather events**, including wildfires, flooding, and extreme heat. Strategies to climate-proof their facilities include installing adequate backup power supply, raising ground floors in flood prone areas, and developing a stockpile of emergency medical supplies.

• 2.4 Community Organizations

- a) Partner with local agencies, jurisdictions, and community-based organizations to **establish a promotores program** (i.e., community health workers) that can provide culturally and linguistically responsive navigation to help low-income residents learn about, connect to, and navigate existing healthcare and social services. Partner with other public agencies, such as the County of Sonoma's Department of Health Services, to cost-share the program.
- b) Partner with other stakeholders to **co-create a centralized and multilingual online hub** that aggregates all public resources and services available for residents. Include resources and services offered by the City, County, State, local non-profits, and other agencies.

Goal 8: Residents from across the city are engaged in decisions that impact their lives.

- **Policy 8.1: Enhance equitable engagement** practices and engage community members most impacted by racial and social inequities in Petaluma.
- **Policy 8.2: Encourage and enhance opportunities for youth to be civically engaged** in Petaluma.



Goal 8: Residents from across the city are engaged in decisions that impact their lives.

Implementation actions to accomplish this goal and policies:

- **8.1 Enhance equitable engagement practices**

- a) **Convene an annual outreach meeting** of community-based organizations, faith-based institutions, radio stations, and other local stakeholders **to provide them with updates on City services, programs, and resources available for their members.** Provide and promote opportunities for low- or no-cost meeting rooms in City facilities for local stakeholders as incentives for strengthening community engagement.
- b) Partner with local stakeholders and conduct deliberate outreach to Equity Priority Areas to **ensure that the City's boards and commissions reflect the rich diversity of Petaluma.**
- c) Continue to hold community meetings and focus groups to gather community input into City decision-making processes. **Locate community meetings in Equity Priority Areas** and at times that are convenient for community members.

Goal 8: Residents from across the city are engaged in decisions that impact their lives.

Implementation actions to accomplish this goal and policies:

- **8.2 Enhance youth civic engagement**

- a) **Continue to promote the Youth Commission and conduct ongoing learning and evaluation** to strengthen the commission and youth civic engagement over time.
- b) **Pilot a summer youth internship program within Petaluma City departments**, with targeted recruitment of low-income youth and youth of color, to address opportunity gaps via exposure to government.
- c) Partner with Petaluma City Schools to **expand civics education** in the existing curriculum, to co-host voter registration drives, and to encourage students to volunteer as poll workers and be engaged in City affairs.



GPAC Discussion

What are your thoughts on the proposed policies and actions?

Is there anything you would like to add?

Goal 3: Petaluma neighborhoods have reduced exposure to air pollution and wildfire smoke.

- **Policy 3.1: Minimize residents' exposure** to harmful air pollutants, especially those in Equity Priority Areas.
- **Policy 3.2: Reduce air pollution and vehicle-related emissions**, especially from diesel-based trucks, that travel to, from, or through Petaluma.



Source: Argus-Courier

Goal 3: Petaluma neighborhoods have reduced exposure to air pollution and wildfire smoke.

Implementation actions to accomplish this goal and policies:

- **3.1 Minimize residents' exposure**

- a) Partner with Petaluma City Schools, Sonoma County Library, community-based organizations, and other stakeholders to **provide portable indoor air filtration units to low-income households**. Explore funding opportunities through the Bay Area Air Quality Management District (BAAQMD) and the California Air Resources Board (CARB).
- b) Partner with Petaluma City Schools and explore funding strategies to **ensure all public schools have updated HVAC systems with HEPA filters**.
- c) **Update the zoning code to limit siting new sensitive land uses** (e.g., schools, playgrounds, healthcare facilities, affordable housing, and elder and childcare centers) **within 1,000 feet of Highway-101**. For sensitive land uses that cannot be sited at least 1,000 feet away, require property owners to implement appropriate mitigation measures to reduce indoor air pollution such as heating, ventilation, and air conditioning (HVAC) systems with High-Efficiency Particulate Air (HEPA) filters, landscape barriers, and other physical improvements as recommended by BAAQMD and/or CARB.
- d) **Update the zoning code to limit the siting of new industrial facilities that emit air pollutants and/or toxic chemicals within 1,000 feet of existing sensitive land uses** (e.g., schools, playgrounds, healthcare facilities, affordable housing, and elder and childcare centers). For new industrial facilities that cannot be sited at least 1,000 feet away, require property owners to implement appropriate mitigation measures to reduce air pollution.

Goal 3: Petaluma neighborhoods have reduced exposure to air pollution and wildfire smoke.

Implementation actions to accomplish this goal and policies:

- **3.1 Minimize residents' exposure**

e) Partner with BAAQMD and/or local universities to **explore funding opportunities for low-cost air quality sensors to monitor local air quality data**, especially in Equity Priority Areas.

f) Partner with the County of Sonoma and other local jurisdictions to **develop a regionwide action plan for wildfire smoke days**. Advocate for low-income households and Equity Priority Areas to be prioritized for emergency response services.

- **3.2 Reduce vehicle-related emissions**

- a) **Maintain an up-to-date truck routes map that minimizes exposures to sensitive land uses** (e.g., schools, playgrounds, healthcare facilities, affordable housing, and elder and childcare centers).
- b) Partner with local jurisdictions and agencies to **advance strategies that reduce regional dependence on motor vehicles** and decrease vehicle-related emissions, especially from Highway-101.
- c) **Establish a local ordinance that exceeds the State vehicle idling restrictions**, including restrictions for bus layovers, delivery vehicles, trucks at warehouses and distribution facilities and taxis, particularly when these activities take place near sensitive land uses. Manage truck idling in residential areas.
- d) Partner with public and private stakeholders to **establish an electric-vehicle car sharing program in Equity Priority Areas** that is available for low-income households.

GPAC Discussion

What are your thoughts on the proposed policies and actions?

Is there anything you would like to add?

Goal 4: Petaluma equitably provides public services and facilities for all residents.

- **Policy 4.1:** Equitably provide services to support low-income residents with **adapting to climate change**.
- **Policy 4.2:** Equitably upgrade and expand **transit services** across the city.
- **Policy 4.3:** Improve **community safety** for all residents, especially low-income communities and communities of color.
- **Policy 4.4:** Encourage and support efforts that help **reintegrate formerly incarcerated persons** into positions of employment and positive roles in the community, including working with local employers.
- **Policy 4.5:** Support an equitable distribution of **high-quality digital infrastructure** and facilities across the city.
- **Policy 4.6:** Support **multicultural arts programming** that reflects the diversity of lived experiences of residents of Petaluma.

Goal 4: Petaluma equitably provides public services and facilities for all residents.

Implementation actions to accomplish this goal and policies:

• 4.1 Climate adaptation

- a) Continue coordinating with local agencies and organizations to **establish centralized resilience hubs during extreme weather days**, and provide transportation to these facilities for older adults, persons with disabilities, and other residents who may have transportation barriers.
- b) Partner with local nurseries and other small businesses to develop a program to **provide low-income homeowners with native, low-maintenance, and/or fruit trees at low or no-cost.**

• 4.2 Transit services

- a) Ensure Petaluma Transit's **bus routes provide convenient service to existing and future healthcare and social service facilities**, especially from Equity Priority Areas.
- b) **Design a community arts competition** to add artwork to the City's bus stops.
- c) **Promote expanded affordable and reliable transportation options for persons with disabilities**, especially school-based transportation services for developmentally and physically disabled students.

Goal 4: Petaluma equitably provides public services and facilities for all residents.

Implementation actions to accomplish this goal and policies:

• 4.3 Community safety

- a) Strengthen community cohesion through community engagement efforts to **build cross-cultural trust between the Police and Fire Departments and residents of color and low-income residents.**
- b) **Continue the Specialized Assistance for Everyone (SAFE) program that provides mobile crisis response** to community members experiencing issues related to mental health, substance use, and homelessness
- c) Explore the adoption of an ordinance to **end the practice of ticketing bicyclists** who ride on city sidewalks if the street segment does not have a Caltrans Class I shared-use path or Class IV separated bikeway.
- d) **Explore the creation of a new traffic enforcement unit** composed of unarmed staff that enforce traffic rules and respond to collisions.

• 4.4 Reentry and reintegration

- a) Identify and implement resources, programs, and partnerships to successfully **support diversion and reentry efforts for justice-involved youth and young adults.**



Goal 4: Petaluma equitably provides public services and facilities for all residents.

Implementation actions to accomplish this goal and policies:

• 4.5 Digital infrastructure

- a) Study the feasibility and **identify opportunities to supply public WiFi access**, charging stations, and/or public workstations at all municipal buildings and recreational facilities.
- b) Partner with local internet service providers to **expand high-speed broadband service** to all parts of the city.
- c) **Partner with the County of Sonoma's Department of Health Services** to regularly monitor scientific research on the potential health impacts of electric magnetic fields from broadband infrastructure. Implement any mitigation measures to minimize exposure, as necessary.

• 4.6 Multicultural arts programming

- a) Partner with local non-profit organizations, foundations, and other stakeholders to **establish a multicultural center** that can provide physical space for a variety of arts, culture, and recreational programming.



Source: The Press Democrat

GPAC Discussion

What are your thoughts on the proposed policies and actions?

Is there anything you would like to add?

Goal 5: Petaluma promotes healthy eating & reduces food insecurity among low-income residents.

- **Policy 5.1:** Improve access to fresh produce and strengthen the local economy by encouraging **urban food production** and food microenterprises.
- **Policy 5.2:** Increase access to food and **reduce food insecurity** among low-income residents.
- **Policy 5.3:** **Limit** the establishment of businesses that primarily serve **alcohol and unhealthy foods**.
- **Policy 5.4:** **Promote healthy eating habits** and good nutrition among residents of Petaluma.



Source: Petaluma County

Goal 5: Petaluma promotes healthy eating & reduces food insecurity among low-income residents.

Implementation actions to accomplish this goal and policies:

• 5.1 Urban food production

- a) **Update the Zoning Code to allow small-scale urban agriculture**, including accessory uses such as temporary on-site urban agriculture stands, as a permitted or conditional use in most zones. Examples of small-scale urban agriculture include food gardens, fruit trees, backyard chickens, and non-commercial greenhouses and beehives.
- b) Partner with the County of Sonoma's Department of Health Services to **support innovative food microenterprises**, such as home kitchen operations and mobile food facilities, to promote local food production and address food insecurity.
- c) Partner with local community based organizations, businesses, Petaluma City Schools, and other stakeholders to **create a community commercial kitchen facility to serve as a learning lab** for students and an economic development building block for food microenterprises.
- d) **Adopt a "Healthy Corner Store" policy** to encourage corner stores to offer healthy food and beverage options, decrease unhealthy food advertising, adjust floor plans to encourage healthier eating choices. Utilize economic development incentives to encourage existing stores in Equity Priority Areas to sell fresh, healthy foods. Pursue funding and partnerships and develop incentive programs to encourage the equitable availability of healthy food options.

Goal 5: Petaluma promotes healthy eating & reduces food insecurity among low-income residents.

Implementation actions to accomplish this goal and policies:

• 5.2 Reduce food insecurity

- a) **Encourage** grocery stores, farmers' markets, and other healthy food retailers to accept **CalFresh Electronic Benefit Transfer (EBT) cards; Women, Infants, and Children (WIC) benefits; and Senior Farmer's Market Nutrition Program benefits.**
- b) Partner with local grocery stores, restaurants, and other food retailers to **divert food waste and donate extra food** to local food banks, soup kitchens, and shelters.
- c) **Encourage edible landscapes**, fruit trees, and community gardens in the City's parks and public spaces.

• 5.4 Promote healthy eating habits

- a) Partner with Petaluma City Schools to create and **expand educational programs** for children and youth on healthy eating, water consumption, and gardening and composting.
- b) **Enact a nutrition policy** that requires healthy food and beverage options be served at City events that provide food and beverages.
- c) **Explore the creation of a citywide fee on sugar-sweetened beverages** to fund child and youth development programs, such as childcare and healthy eating programming.

Goal 5: Petaluma promotes healthy eating & reduces food insecurity among low-income residents.

Implementation actions to accomplish this goal and policies:

- **5.3 Limit alcohol and unhealthy foods**

- a) Update the Zoning Code to establish definitions for liquor stores and wine shops as commercial establishments that primarily sell alcoholic beverages for off-site consumption. **Prohibit new liquor stores or wine shops within 1,000 feet of a youth-oriented area** (as defined in the City's Municipal Code) and within 500 feet of another liquor store or wine shop.
- b) Update the Zoning Code to **prohibit new alcoholic beverage establishments** (as defined in the City's Zoning Code) **within 1,000 feet of a youth-oriented area** (as defined in the City's Municipal Code).
- c) Update the Zoning Code to **define convenience stores and require them to have a conditional use permit**. Require conditional use review upon lease renewal or at point of business sale.

GPAC Discussion

What are your thoughts on the proposed policies and actions?

Is there anything you would like to add?

Goal 6: Low-income residents have access to safe and sanitary housing and shelter.

- **Policy 6.1:** Encourage the identification and **elimination of common sources of unhealthy housing**, including mold and moisture, pests, poor indoor air quality, safety problems, contaminants and toxic substances, and deferred maintenance.
- **Policy 6.2:** Coordinate with the Sonoma County Housing Authority, the Committee on the Shelterless (COTS), the Downtown Streets Team (DST), and other stakeholders to **help residents currently or at risk of experiencing homelessness** to access education, facilities, and health services.
- **Policy 6.3:** Promote programs that **increase resiliency to climate impacts** for low-income homeowners and residents of affordable multi-family housing units.



Source: Argus-Courier

Goal 6: Low-income residents have access to safe and sanitary housing and shelter.

Implementation actions to accomplish this goal and policies:

• 6.1 Unhealthy housing

- a) **Enforce applicable provisions of the housing and building codes.** Where implementation of applicable provisions may result in housing displacement, identify opportunities to ensure residents remain housed.
- b) Partner with the County of Sonoma and other regional agencies to support programs designed to **rehabilitate deteriorated units** through weatherization, modernization, and elimination of common home pollutants.
- c) In cooperation with the County of Sonoma and other regional agencies, **establish a lead-based paint and asbestos removal program** for affordable housing units built before 1980.

• 6.2 Homelessness services

- a) Implement the **2022 Strategic Plan to End Homelessness.**
- b) Establish a **dedicated homeless service coordinator** position to function as a liaison with the County and Petaluma residents currently or at risk of experiencing homelessness.
- c) Work with homeless service providers to **provide mobile shower and/or safe restroom facilities** for unhoused residents.
- d) Work with homeless service providers to prioritize legal help, rapid housing assistance, and other social services for **unhoused children, youth, and families** in Petaluma.
- e) Continue to partner with the local shelters to **provide cots for emergency shelter situations**, including wildfire smoke days, extreme heat and cold days, and other extreme weather events.

Goal 6: Low-income residents have access to safe and sanitary housing and shelter.

Implementation actions to accomplish this goal and policies:

- **6.3 Climate resiliency**

- a) **Provide application assistance** for low-income home owners who qualify for **State and Federal programs that cover the cost of home improvements**. Types of improvements include HVAC systems with HEPA filters, induction stovetops, double pane windows, door weather stripping, and attic and floor insulation.
- b) Develop a program to **work with property owners of existing multifamily residential buildings**, especially those in Equity Priority Areas, to install HVAC systems with HEPA filters, induction stovetops, double pane windows, and door weather stripping.

Goal 7: Residents, of all incomes and abilities, have opportunities to lead active lifestyles.

- **Policy 7.1:** Promote efforts to **educate and encourage residents to take active forms of transportation.**
- **Policy 7.2:** Improve safety and physical activity for students and families, especially in Equity Priority Areas, **in trips to and from school.**
- **Policy 7.3:** Continue to provide **City recreational programs that focus on physical activity** and that promote active lifestyles. Ensure there are recreational services available for all residents, including persons with disabilities.
- **Policy 7.4:** Provide **well-designed trails and active play amenities** in parks and open spaces with amenities to accommodate a range of users.



Source: Argus-Courier

Goal 7: Residents, of all incomes and abilities, have opportunities to lead active lifestyles.

Implementation actions to accomplish this goal and policies:

- **7.1 Education and encouragement**

- a) Partner with local small businesses and non-profit organizations to **provide residents with skills training in bicycle riding, safety, maintenance, and repair**. Ensure these trainings are also available in Spanish and other locally relevant languages.
- b) Continue to **support the annual Ciclovía event** that temporarily closes streets to motor vehicles to make them accessible and inviting for residents to take active forms of transportation.

- **7.2 Safety to and from school**

- a) In partnership with Petaluma City Schools, **continue existing and establish new local Safe Routes to School programs** at every public school in the city. Prioritize improvements for schools that serve Equity Priority Areas.
- b) Partner with Petaluma City Schools, the County of Sonoma's Department of Health Services, and other stakeholders to **hire and cost-share a dedicated staff position to advance the Safe Routes to School programs** in Petaluma and to apply for State and Federal grants.
- c) Work closely with Petaluma City Schools and the County of Sonoma's Department of Health Services to **conduct annual school travel tallies and annual evaluations of data on traffic collisions, injuries, and fatalities near schools**. Leverage this data to guide decision-making related to Safe Routes to School and to assess progress in mode-shifting students and families to more active forms of transportation.

Goal 7: Residents, of all incomes and abilities, have opportunities to lead active lifestyles.

Implementation actions to accomplish this goal and policies:

- **7.1 Recreational programs**

- a) **Support and expand free or low-cost waivers** for low-income youth, older adults, and others to participate in City-run physical activity programs and activities.

- **7.2 Trails and active play amenities**

- a) Continue to **create public, private, and non-profit partnerships to develop and maintain parks**, recreational facilities, and publicly accessible private open spaces, especially in Equity Priority Areas.
- b) **Upgrade the Lynch Creek Trail** to include safe street crossings and abundant lighting, seating, and wayfinding amenities to better connect East and West Petaluma and to encourage physical activity.

Public Comments

Discussion: Health Equity and Environmental Justice Policy & Strategy Ideas

Health Equity and Environmental Justice

Discussion Questions/Topics

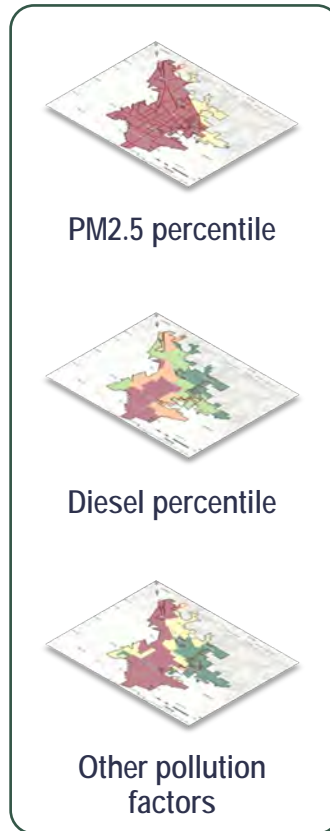
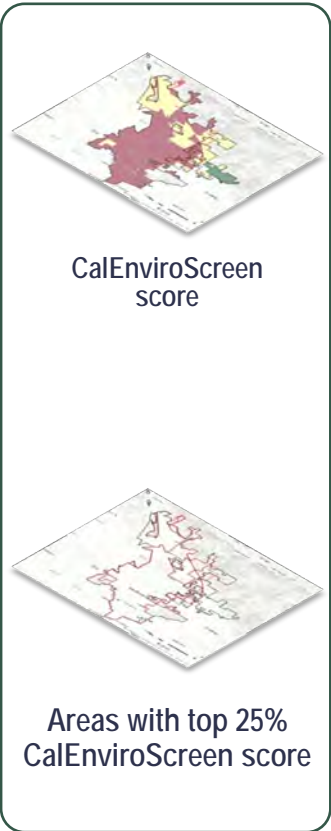
- Any last general responses to what was presented?
- If you could choose one large aspirational health equity and EJ project for the City to focus on, what would it be?

Final GPAC Thoughts

Appendix Slides

Disadvantaged Community Screening Analysis

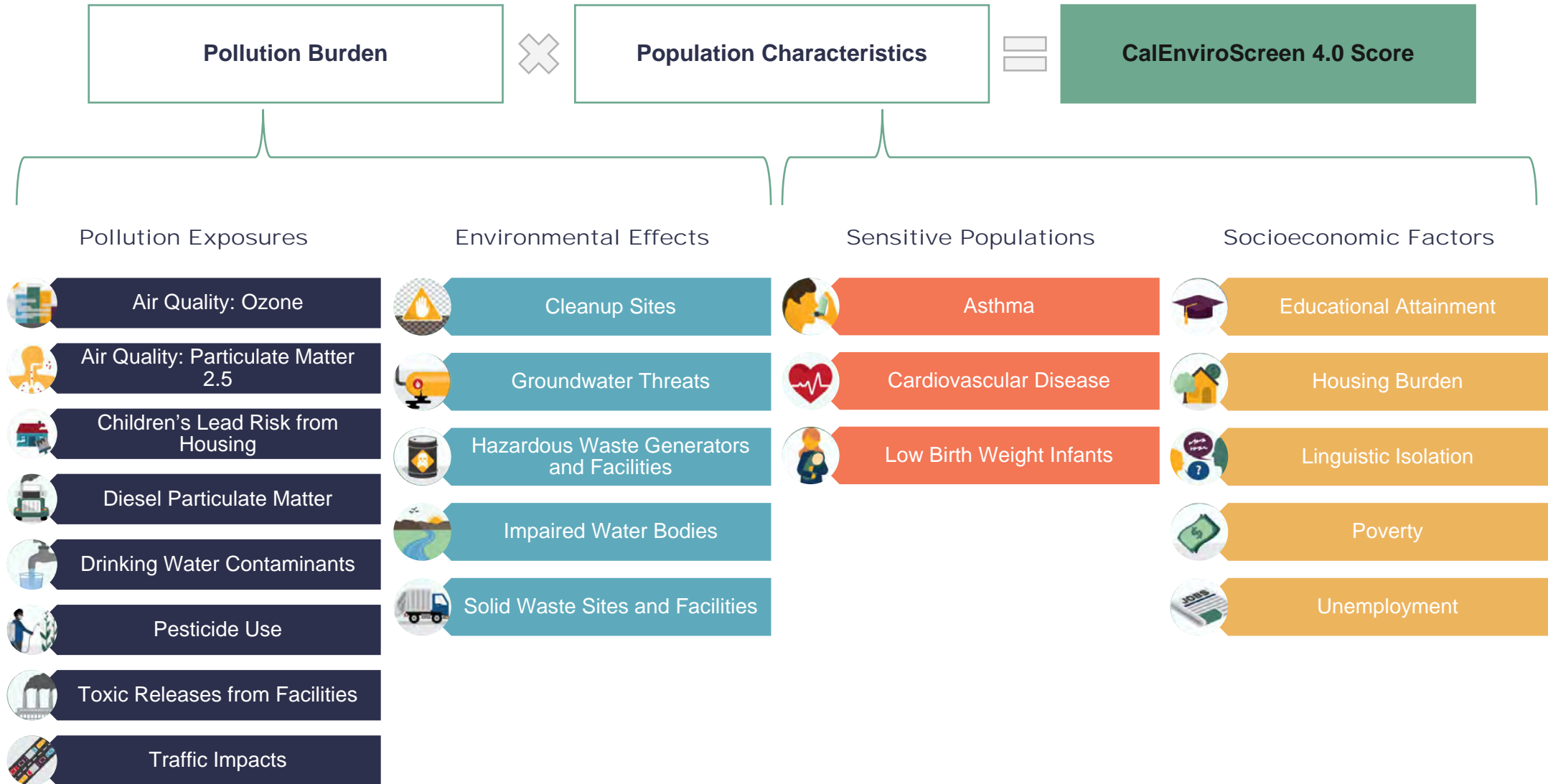
Method 1 CalEnviroScreen 4.0



Method 3 Community-specific data and groundtruthing



CalEnviroScreen 4.0 Indicators



Additional Indicators

Spatial comparisons of below indicators to social vulnerability, income, and race/ethnicity

Health Outcomes

- Life expectancy at birth
- Adult asthma rate
- Asthma hospitalization rate
- Adult heart disease rate
- Heart disease hospitalization rate
- Infant low birth weight rate
- Adult obesity rate

Pollution Exposure

- Proximity to high-volume roadways

Food Access

- Access to healthy food
- Food insecurity

Physical Activity

- Adult walking rates
- Active commuting rates

Public Facilities

- Proximity to high-frequency transit
- Access to parks
- Tree canopy

Housing

- Cost-burdened households
- Overcrowded households

Over 30 total indicators analyzed

Low-Income Thresholds

- California’s Department of Housing and Community Development (HCD) releases annual state income data to determine low-income thresholds at a statewide and county level.
- Since the Census Bureau’s 2015-2019 American Community Survey is the most recently available income data, this analysis references the 2019 HCD State Income Limits.
- For the Method 2 analysis, **the General Plan Team is identifying census tracts and block groups as low-income if they are at or below 80% of Sonoma County’s AMI, which is \$74,640.**
- The County AMI is slightly higher than the 80% of Petaluma’s AMI of \$73,222 and much higher than the statewide median income of \$65,760.

	California	Sonoma County	Petaluma
Area Median Income (AMI)	\$82,200	\$93,300	\$91,528
80% of AMI	\$65,760	\$74,640	\$73,222

2019 HCD State Income Limits