

General Plan Advisory Committee Meeting

March 16, 2023

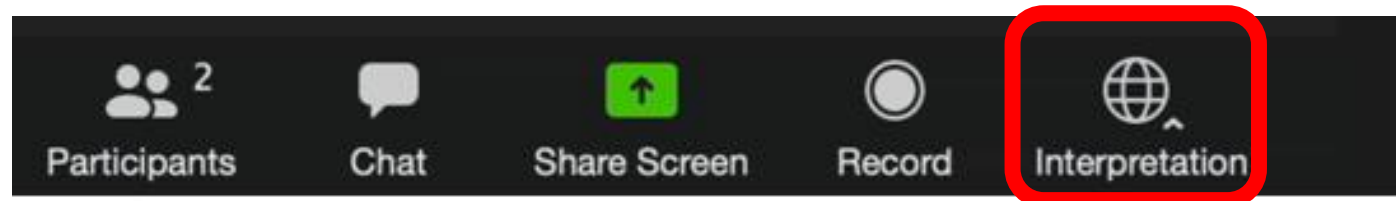
Zoom – La interpretación

- Interpretation

La interpretación en simultáneo para esta reunión se dará en los siguientes idiomas:

Español (Maria Galvez & Martin Rivarola) – bajo la opción Español

Por favor haz clic en el icono INTERPRETATION en tu barra de herramientas para acceder al idioma deseado

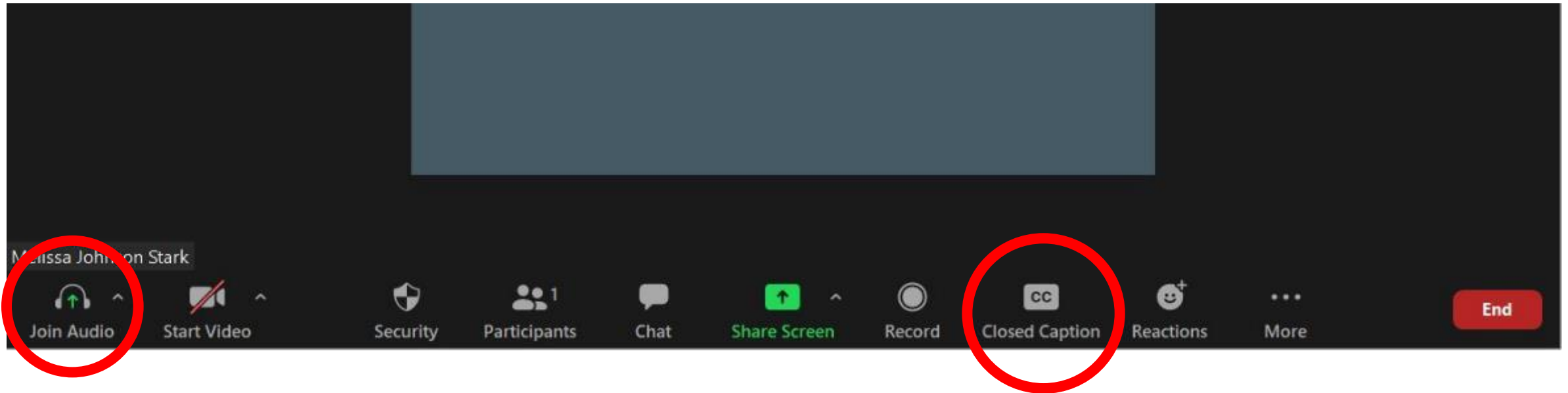


GPAC Roll Call

1. Dave Alden
2. Stephanie Blake
3. Phil Boyle
4. Erin Chmielewski
5. Mary Dooley
6. Sierra Downey
7. Jessie Feller
8. Ali Gaylord
9. Yensi Jacobo
10. Kevin Kelly
11. Sharon Kirk
12. Roger Leventhal
13. Iliana Inzunza Madrigal
14. Roberto Rosila Mares
15. Brent Newell
16. Kris Rebillot
17. Bill Rinehart
18. Joshua Riley Simmons
19. Elda Vazquez-Izaguirre
20. Lizzie Wallack
21. Bill Wolpert

Logistics

Zoom Instructions

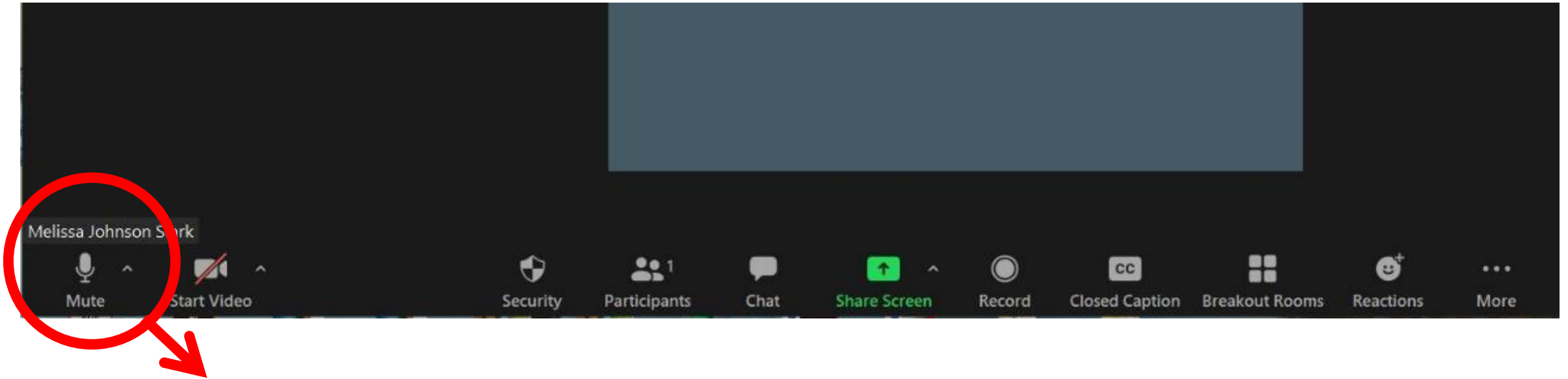


Join Audio

- Two options:
 - *Use your device's audio*
 - *Call in using a cell phone*

Closed Caption is available

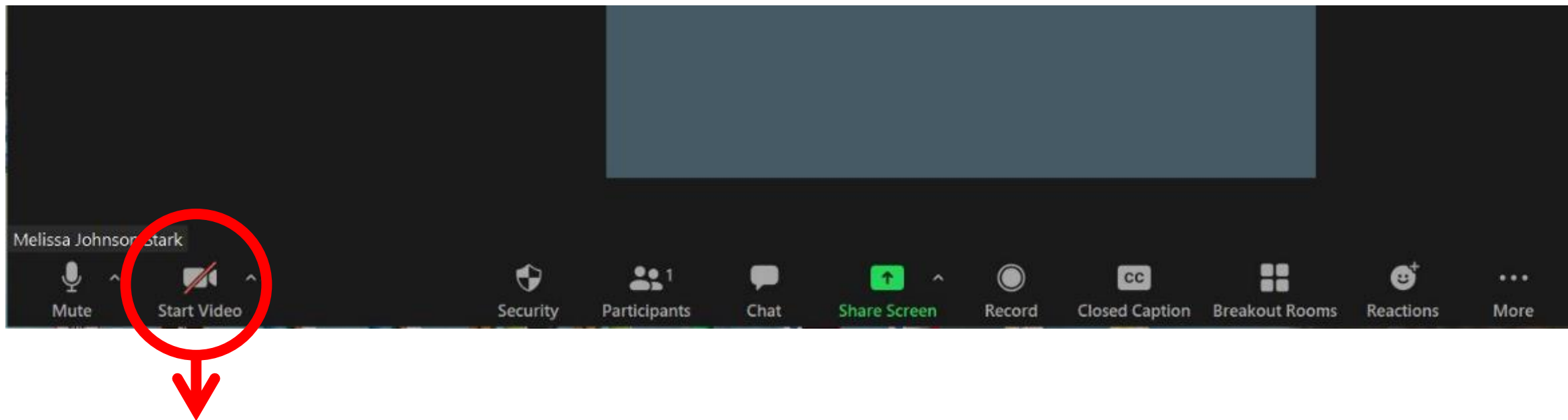
Zoom Instructions



Once Audio is Connected – Please Mute

- Please remain muted until it is your turn to speak
- To un-mute, press the same button
- If joining by phone, press *6 to mute/unmute

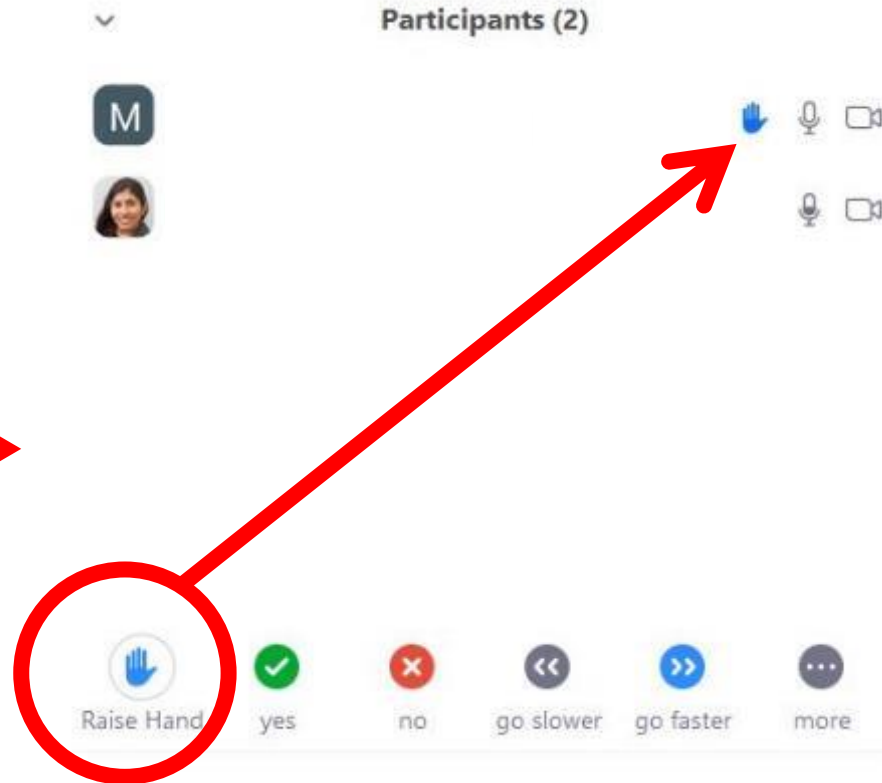
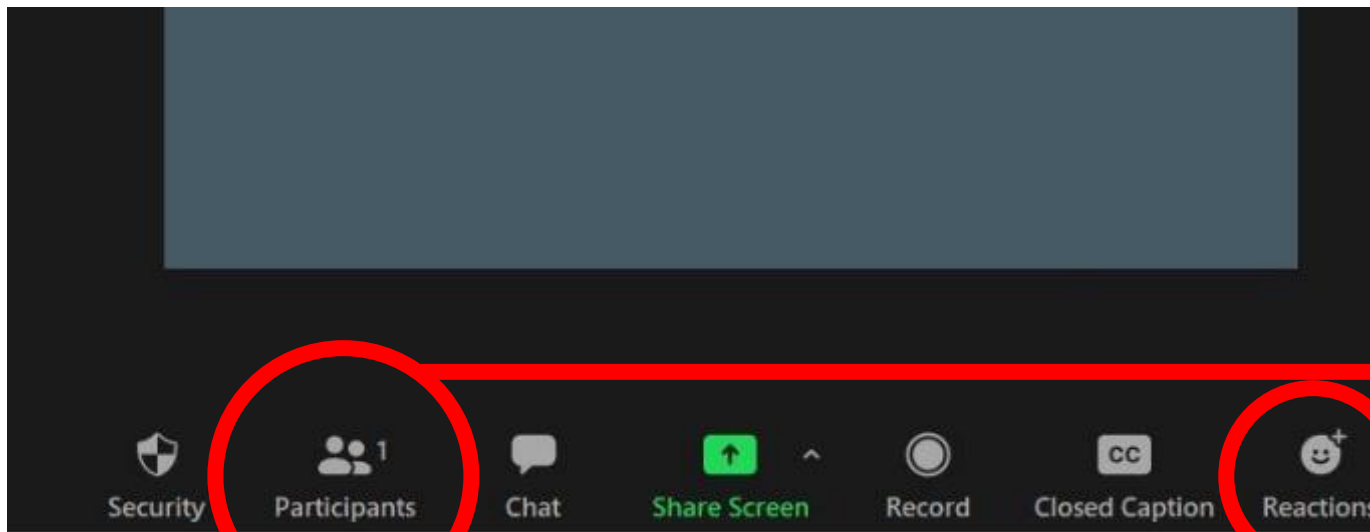
Zoom Instructions



Start Video (GPAC Only)

- **GPAC:** Please keep your camera on for the duration of the meeting
- **Public:** Please keep your camera off unless speaking during public comment

Zoom Instructions



Raise your “Hand” to Speak

- Please use the “Raise Hand” feature if you want to speak. By phone, press *9. The team will call on GPAC members individually. Please remain muted until called on.
- **Public:** Please only raise your hand during public comment. You can also use the **Q+A function** to send the Host questions during the meeting.

Zoom – What You Need To Know

For any technical difficulties, please email

Daniel Harrison at

dharrison@cityofpetaluma.org

Para cualquier dificultad técnica, envíe un correo electrónico a Maria Galvez:

mapigalvez@gmail.com

Supporting Access and Live Interpretation

- Please remember to speak slowly – our interpreters are working hard to translate accurately
- Reduce the use of acronyms and make sure to explain them when you do use them



Meeting Overview

6:30pm: Roll Call and Logistics

6:40pm: General Public Comment

6:50pm: Presentation: Small Artwork Commission

7:05pm: Project and Staff Updates

7:15pm: Safety Element Policy & Strategy Ideas

- Presentation
 - GPAC questions throughout
- Public Comment
- GPAC discussion

8:55pm: Final GPAC Thoughts

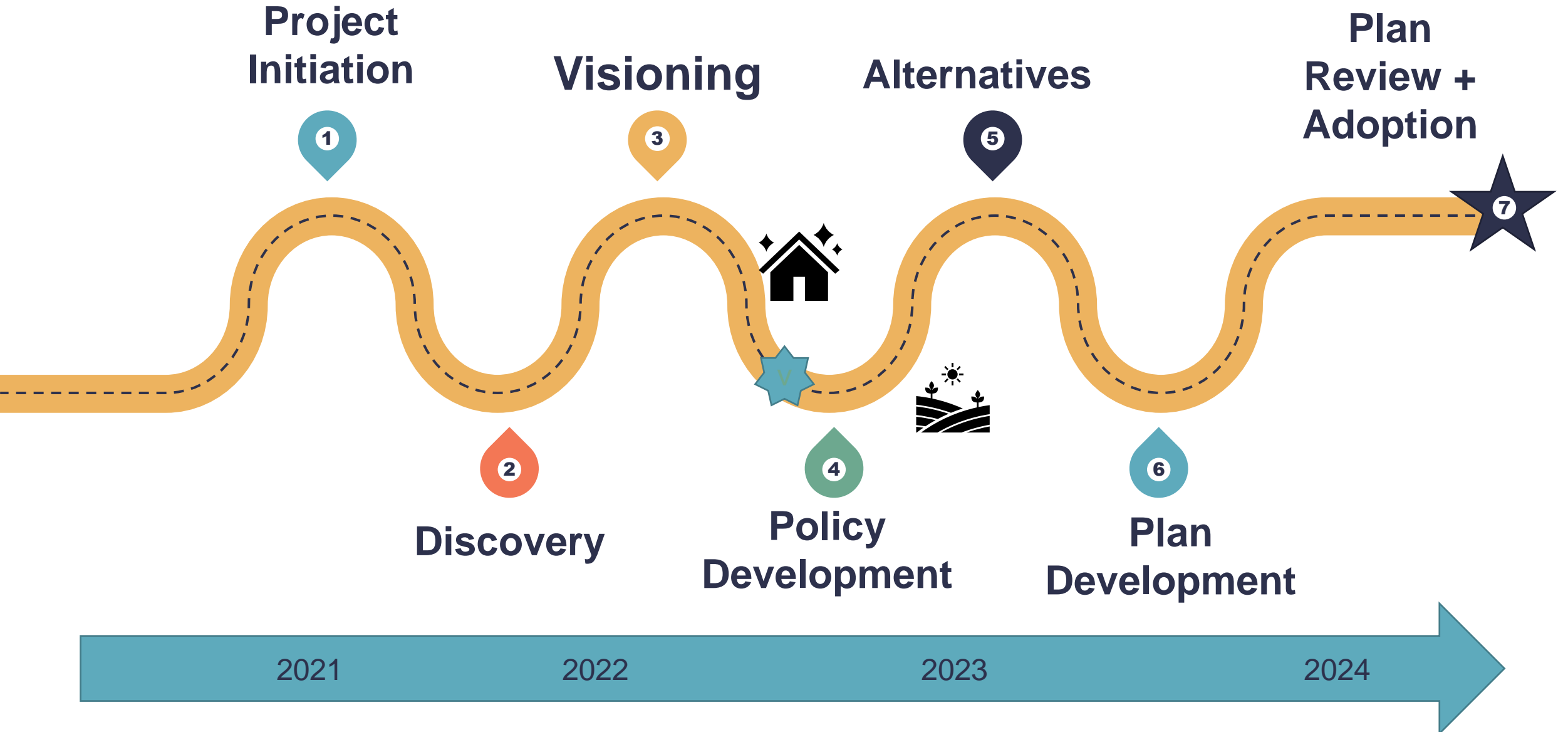


General Public Comment

Small Artwork Commission Presentation

Project & Staff Updates

Project Roadmap



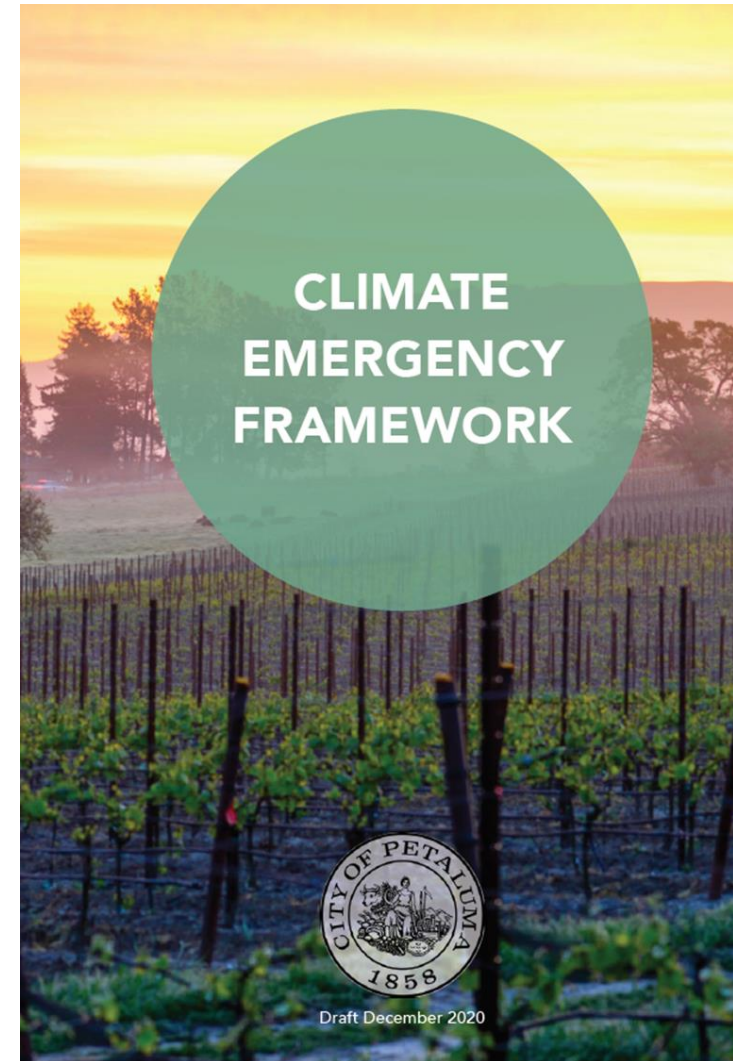
Housing Element Final Steps

- February 27: City Council direction
- March 14: Planning Commission recommendation
- March 20: Council consideration for adoption
- April-May: 60-day HCD review for certification



Climate Action Planning

- **Ongoing:** Greenhouse Gas Reduction strategy prioritization, engagement with CAC on administrative draft
- **Ongoing:** Continue to align General Plan, VMT reductions, GHG Reduction Strategy, adaptation planning, and GP CEQA EIR
- **Spring:** Public Draft



Mapping the River: Floodplain and Sea Level Rise

- **Now:** Staff working with West Consulting, Sherwood Engineers and GPAC adaptation group on draft model runs
- **Next:** Discussion of updated mapping with the GPAC and CAC



Other updates?

- Sign up for the Community Update and Meeting notices!
- **CityOfPetaluma.org/Subscribe**



GPAC Meetings: Online and In-person

- GPAC Meeting Online/In-Person Survey
 - 60% would prefer to continue to meet online
 - 40% would like to meet in person
 - 30% CANNOT regularly (or ever) meet in person
 - Members expressed interest in variety of formats
- February 27: Council designates GPAC as a volunteer group (not a Brown Act body)
- GPAC can meet in person and online
- We anticipate some meetings will continue to be online
- Staff are working to determine what our options are for in-person meetings
- Could be possible to have hybrid in-person/online meetings in a conference room with advanced Zoom capacity



Clarifying Questions or Comments from GPAC Members

Safety

Presentation Overview

- Safety Element Requirements
- Existing Conditions
- Community Direction
- Policy & Strategy Ideas



Safety Element Requirements

General Plan Requirements

Safety Element Requirements

- Government Code section 65302 (g) requirements: Establish a set of goals, policies, and objectives for the protection of the community from unreasonable risks
 - Seismic and geologic, including rupture, shaking, slope instability, subsidence, liquefaction
 - Flooding
 - Wildland and urban fires
 - Climate change

General Plan Requirements

Recently Added Safety Element Requirements

- Government Code section 65302 (g) requirements:
 - Identify residential developments in any hazard area that do not have at least two emergency evacuation routes
- Government Code section 65302.15 (a)
 - Evaluate evacuation route capacity, safety, and viability under a range of emergency scenarios
 - Identify evacuation locations
- Government Code section 65302.5 (b) requirements:
 - At least 90 days prior to the adoption or amendment of their safety element, cities that contain Very High Fire Hazard Severity Zones shall submit their safety element to the Board of Forestry and Fire Protection

Related Elements and Topics

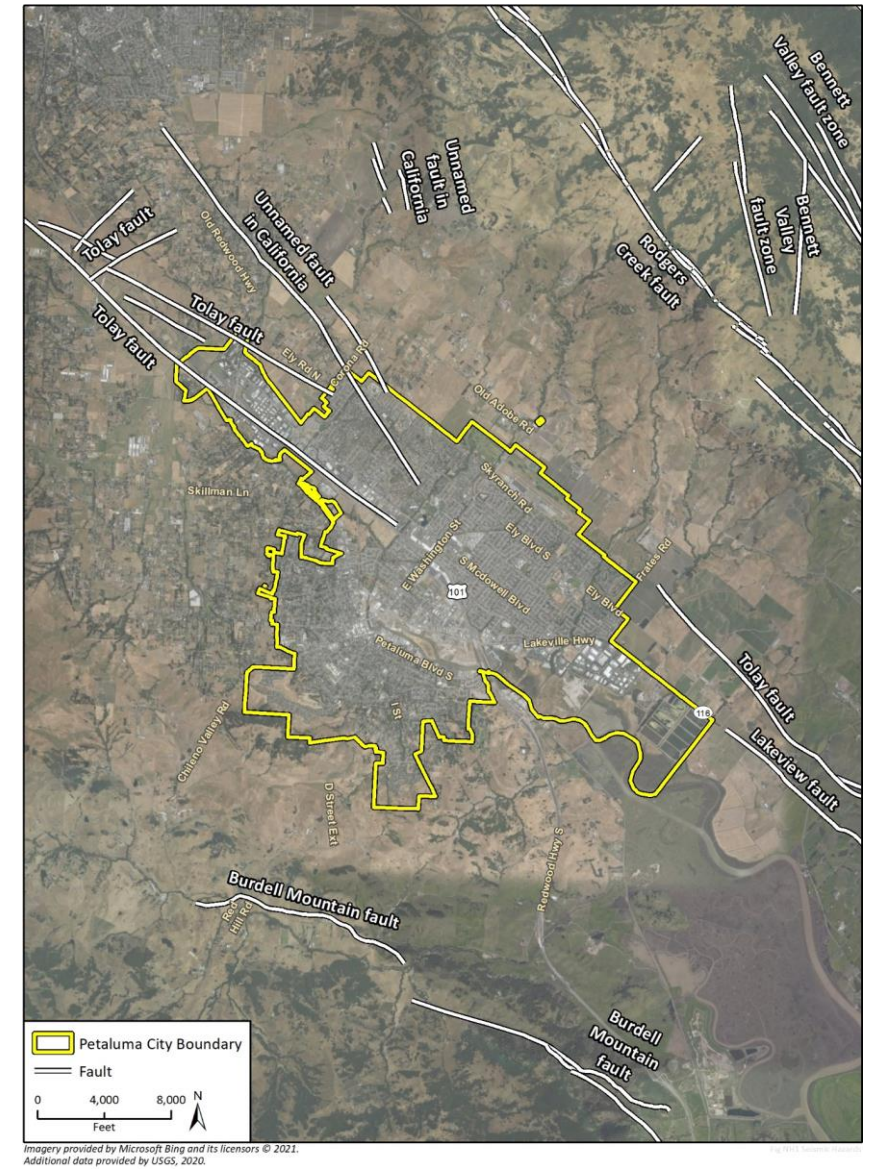
- These Elements tie closely to Safety:
 - **Climate Adaptation**, with a focus on stormwater, flooding and sea level rise
 - **Public Facilities**, with a focus on police, fire, and emergency services
 - **Environmental Justice**, with a focus on air quality, safe and sanitary housing, equitable facilities, services, tree canopy, etc.
- However, all Elements consider and aim to mitigate risk exposures.

Existing Conditions

Key Findings

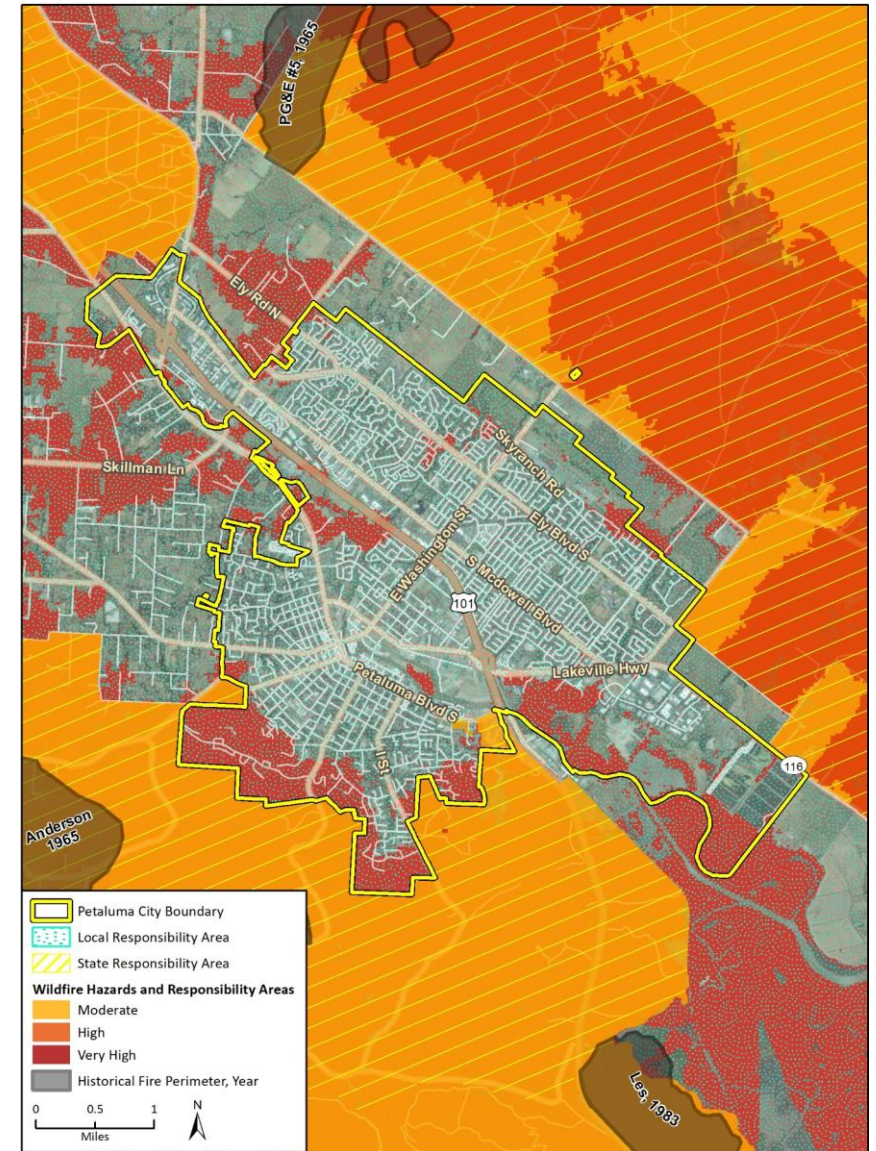
Hazards in Petaluma

- Geologic and Seismic Hazards
 - All of Petaluma is susceptible to severe ground shaking
- Hazardous Waste
 - There are 20 active hazardous material sites and 7 contaminated sites in the city.
- Drought
 - Over the next 20 to 30 years, a drought scenario may reduce the average mean precipitation from 31 inches to 26.3 inches



Hazards in Petaluma

- Wildfires
 - Much of the city is in the Moderate Fire Hazard Severity Zone, but regional pattern suggests fires will increase.
 - The most at-risk areas for wildfire exist along the perimeter.
- Flooding
 - Atmospheric River events can bring up to 50 percent of all the region's annual rainfall over the course of a few days.
- Extreme Heat
 - Extreme heat days will continue to become more frequent and could result in increased heat related illness and death for populations at highest risk.



Imagery provided by Microsoft Bing and its licensors © 2021.
Additional data provided by CalFire, 2021; Wildfire Severity Hazard Class - City of Petaluma, California; Fire Responsibility Area, Historic Fire

Important Policies, Plans, and Programs

- **Petaluma Local Hazard Mitigation Plan:** provides an **assessment of natural and man-made hazards** and outlines strategies and actions to **reduce the risks** associated with these hazards in the City of Petaluma.
- **Petaluma Emergency Operations Plan:** provides the **foundation for the management of emergencies and disasters** within Petaluma and addresses the integration and coordination with the Sonoma County Operational Area, other governmental agencies, and key community partners.
- **Floodplain Management Plan:** describes the **nature and magnitude of flooding** the City has experienced in the past; floodplain management activities implemented to date; additional alternative remedies; and a **plan for future action** to address the current flooding problems.

Community Direction

Related Vision and Pillars

We are forward-thinking leaders.

By achieving carbon neutrality in 2030, we demonstrate that equitable, carbon-neutral, **regenerative communities and economies** are possible through **action and collaboration with other cities, communities, and our region. We have adapted to climate change with a community-driven, whole systems, and nature-based approach to development.**

Climate Action, Resilience, and Sustainability

Petaluma is committed to **bold action** to achieve carbon neutrality by 2030 and to **building resilience to climate change impacts**, including sea level rise, increasing **temperatures, drought, and wildfire intensity**. The General Plan must build **climate-ready communities** using science, technology, and bold ways of thinking to advance change in our relationship with the natural environment and to plan for current and future impacts.

Equity, Justice, and Demographic Changes

Current demographic trends indicate that Petaluma will have an older, more **diverse population** well into the future. Petaluma commits to advancing social and economic justice to create an **inclusive and equitable city** in which all can thrive. The General Plan must prioritize supporting those who have been most affected by injustice and inequity and advances bold action in terms of housing, transportation, **public spaces**, and intergenerational and multi-cultural programs to take advantage of opportunities and meet challenges as they arise.

Related Guiding Principles

Achieve carbon neutrality by 2030 and equitably foster a **sustainable and resilient community** in which today's needs do not compromise the ability of the community to meet its future needs.

- Capitalize on Petaluma's natural assets (river, streams, marshes, trees, plains, etc.) to address climate change and sea level rise.
- Develop strategies to elevate the ecological and environmental benefits of existing parks and open spaces.
- Take bold measures to address watershed management, water use and expected long-term drought conditions.
- Educate the community on the need for regenerative design.
- Make the city more resilient to natural and man-made disasters including sea level rise, fires, earthquakes, and flooding.

Related Guiding Principles

Ensure the **health and wellness** of all residents.

Ensure infrastructure **supports infill development** and addresses the impacts of **climate change**.

- Incorporate new (and potential) climate impacts and hazards into the design of infrastructure systems so that infrastructure is resilient and “climate-ready.”
- Develop strategies to elevate the ecological and environmental benefits of existing parks and open spaces

Advance a forward-looking economic development strategy that focuses on diversity, opportunity, innovation, and **resilience**.

Questions

Do you have any clarifying questions?

- Safety Element requirements
- Existing Conditions Key Findings
- Related Community Direction

Goal & Policy Ideas

Goal & Policy Ideas: Caveat



All of the ideas in this presentation are preliminary ideas. This initial GPAC review will be followed by iterative refinement including additional staff review, review with GPAC Working Groups, decision maker discission and community meetings.

Safety Goals

- **Goal 1: Emergency responders and community members** have the guidance and tools to **effectively respond** to hazard events.
- **Goal 2: Residents, workers, and visitors** are able to **evacuate in a safe and efficient manner or safely shelter-in-place** during an emergency scenario.
- **Goal 3: Critical facilities and infrastructure are resilient** against natural disasters in the wake of climate change.
- **Goal 4: Petaluma is prepared for increasing climate hazard risks** and exacerbations through adaptation and resilience.
- **Goal 5: Petaluma is resilient against riverine and sea level rise** enhanced flooding events.
- **Goal 6: Petaluma is prepared for drought hazards.**
- **Goal 7: Wildfire risk is managed** through local and regional strategies and interdisciplinary approaches.

Goal 1: Emergency responders and community members have the guidance and tools to effectively respond to hazard event.



- **Policy 1.1** Maintain updated emergency operations guidance, standards, and plans in accordance with the LHMP.
- **Policy 1.2** Provide resources and training opportunities for the community to improve their ability to prepare for and respond to emergencies.
- **Policy 1.3** Seek grants to fund emergency operations and first responder assistance.
- **Policy 1.4** Develop a **Disaster Recovery Plan** that includes debris removal, evaluation of post-disaster re-development options, and educational materials for recovery services for rebuilding.

Goal 2: Residents, workers, and visitors are able to evacuate in a safe and efficient manner or safely shelter-in-place during an emergency scenario.



- **Policy 2.1** Alleviate evacuation constraints associated with single-access neighborhoods.
- **Policy 2.2** Address emergency evacuation constraints.

Goal 3: Critical facilities and infrastructure are resilient against natural disasters, including climate change.

- **Policy 3.1** Upgrade **cooling centers** to meet increasing needs and demands for the community due to climate change.
- **Policy 3.2** Prepare **critical facilities** to be more **resilient** following an emergency.
- **Policy 3.3** Prepare City facilities for **all hazard scenarios**.



Discussion Questions

Do you have any clarifying questions?

What are your thoughts about Goals 1, 2, and 3 and their policies?

Goal 1: Emergency responders and community members have the guidance and tools to effectively respond to hazard events.

Goal 2: Residents, workers, and visitors are able to evacuate in a safe and efficient manner or safely shelter-in-place during an emergency scenario.

Goal 3: Critical facilities and infrastructure are resilient against natural disasters in the wake of climate change.

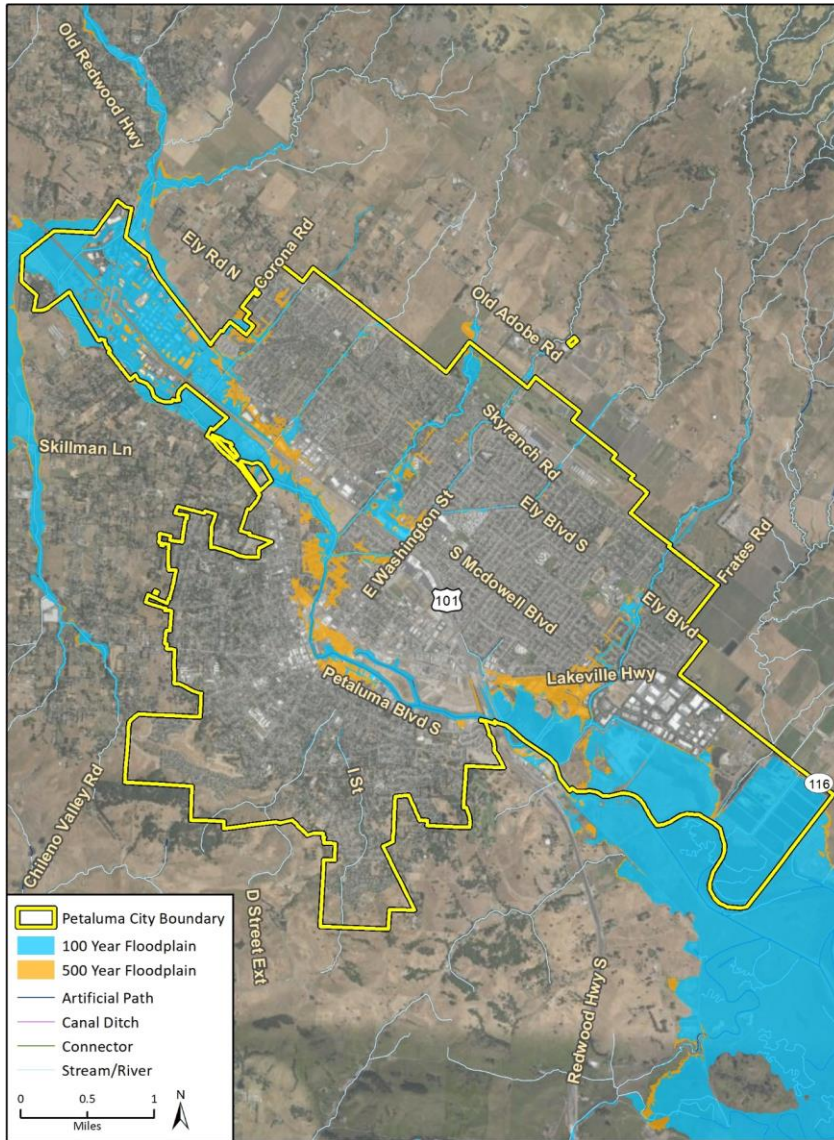
Are there policies you recommend adding?

Goal 4: Petaluma is prepared for increasing climate hazard risks and exacerbations through adaptation and resilience.

- **Policy 4.1** Maintain and update the City's climate hazard planning documents and alignment with the LHMP.
- **Policy 4.2** Require standards for new developments to consider climate-enhanced impacts to all hazards.
- **Policy 4.3** Promote and support efforts to retrofit and upgrade residential and commercial buildings to better prepare for climate change impacts.



Goal 5: Petaluma is resilient against riverine and sea level rise enhanced flooding events.



Imagery provided by Microsoft Bing and its licensors © 2021.
Additional data provided by FEMA, 2020 and USGS, 2020.

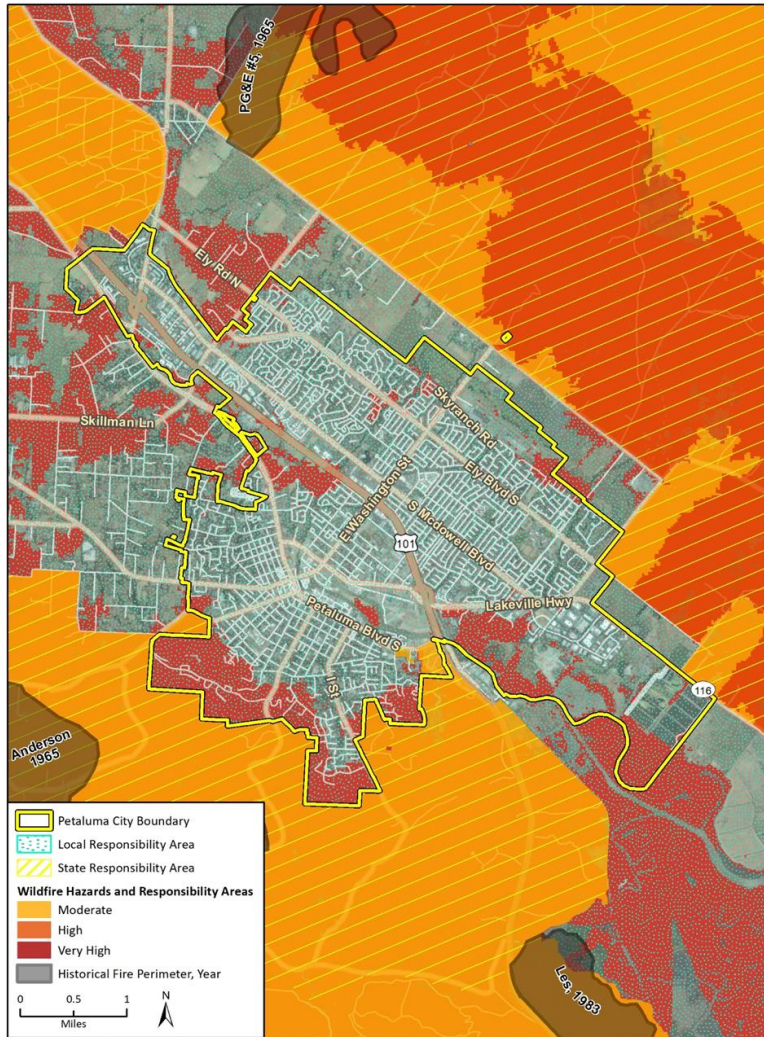
- **Policy 5.1** Implement and consider updating the River Enhancement Plan in a manner that **fosters nature-based solutions**.
- **Policy 5.2** Evaluate **dual use of open space areas and bioswales** including ballfields and parks for flood storage.
- **Policy 5.3** Increase the use of **permeable surfaces** in urban areas to reduce the volume of runoff.

Goal 6: Petaluma is prepared for drought hazards.



- **Policy 6.1** Update the Urban Water Management Plan (UWMP) to address drought risks.
- **Policy 6.2** Increase water efficiency and conservation.
- **Policy 6.3** Increase the use of permeable surfaces in urban areas to reduce the volume of runoff.

Goal 7: Wildfire risk is managed through local and regional strategies and interdisciplinary approaches.

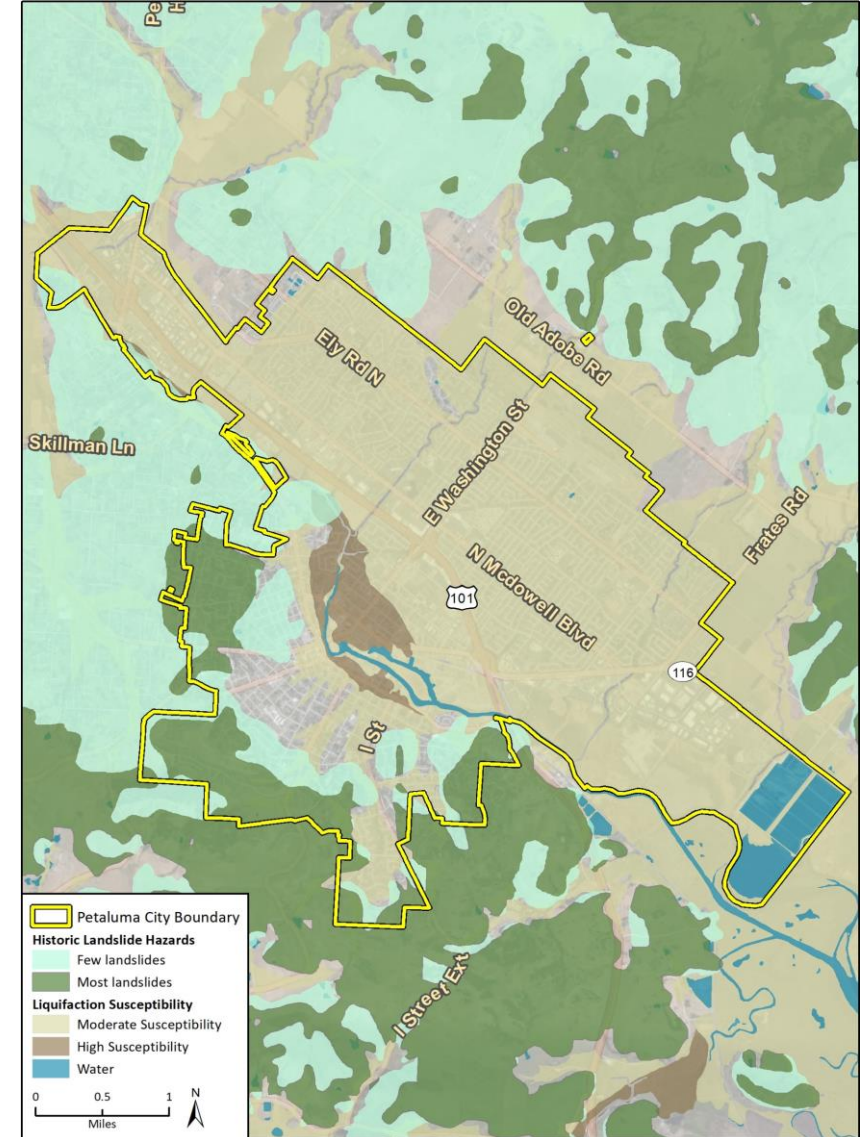


Imagery provided by Microsoft, Bing and its licensors © 2021.
Additional data provided by CalFire, 2021; Wildfire Severity Hazard Class - City of Petaluma, California; Fire Responsibility Area, Historic Fire

- **Policy 7.1** Maintain cooperative working relationships with local and regional fire response agencies and organizations.
- **Policy 7.2** Implement the strategies put forth by the Sonoma County Community Wildfire Protection Plan, including fuel and vegetation reduction and community engagement.
- **Policy 7.3** Coordinate with the Petaluma Fire Department and Sonoma County to prepare a long-term fuel reduction and management plan.
- **Policy 7.4** Develop a Wildland/Urban Interface (WUI) Pre-Fire Plan and evaluate the WUI Zone within the city.
- **Policy 7.5** Ensure fire safe design in future developments and during post-fire disaster recovery, and minimize new residential development in areas with very high wildfire hazard risk.

Goal 8: Property damage and loss of life due to seismic and geologic events are minimal.

- **Policy 8.1** Utilize advanced planning and investments in critical infrastructure to reduce geologic and seismic risk.



Imagery provided by Microsoft Bing and its licensors © 2021.
Additional data provided by USGS, 2021.

Discussion Questions

Do you have any clarifying questions?

What are your thoughts about Goals 4, 5, 6, 7, and 8 and their policies?

Goal 4: Petaluma is prepared for increasing climate hazard risks and exacerbations through adaptation and resilience.

Goal 5: Petaluma is resilient against riverine and sea level rise enhanced flooding events.

Goal 6: Petaluma is prepared for drought hazards.

Goal 7: Wildfire risk is managed through local and regional strategies and interdisciplinary approaches.

Goal 8: Property damage and loss of life due to seismic and geologic events are minimal.

Are there policies you recommend adding?

Public Comments

Discussion: Safety Policy & Strategy Ideas

Safety Discussion Questions/Topics

- Any general feedback on what was presented?
- If you could choose one large aspirational safety-oriented project for the City to focus on, what would it be?

Final GPAC Thoughts