

General Plan Advisory Committee Meeting

May 18, 2023

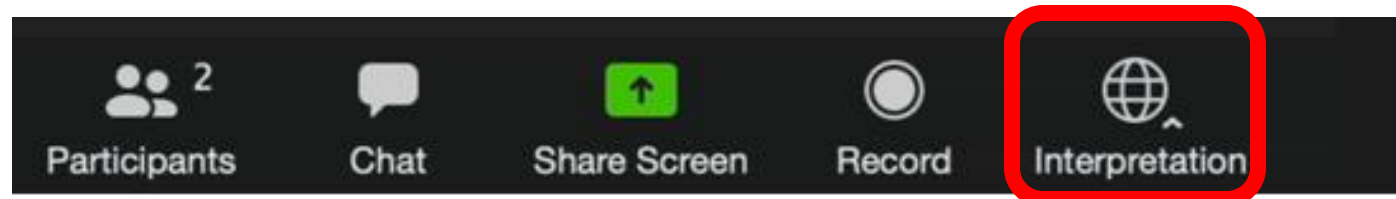
Zoom – La interpretación

- Interpretation

La interpretación en simultáneo para esta reunión se dará en los siguientes idiomas:

Español (Maria Galvez & Monica Aparicio) – bajo la opción Español

Por favor haz clic en el icono INTERPRETATION en tu barra de herramientas para acceder al idioma deseado



GPAC Roll Call

1. Dave Alden
2. Stephanie Blake
3. Phil Boyle
4. Erin Chmielewski
5. Mary Dooley
6. Jessie Feller
7. Ali Gaylord
8. Yensi Jacobo
9. Kevin Kelly
10. Sharon Kirk
11. Roger Leventhal
12. Iliana Inzunza Madrigal
13. Roberto Rosila Mares
14. Brent Newell
15. Kris Rebillot
16. Bill Rinehart
17. Joshua Riley Simmons
18. Elda Vazquez-Izaguirre
19. Lizzie Wallack
20. Bill Wolpert

Logistics

Zoom – What You Need To Know

For any technical difficulties, please email

Daniel Harrison at

dharrison@cityofpetaluma.org

Para cualquier dificultad técnica, envíe un correo electrónico a Maria Galvez:

mapigalvez@gmail.com

Supporting Access and Live Interpretation

- Please remember to speak slowly – our interpreters are working hard to translate accurately
- Reduce the use of acronyms and make sure to explain them when you do use them



Meeting Overview

6:30pm: Roll Call and Logistics

6:40pm: General Public Comment

6:50pm: Project & Staff Updates

7:00pm: SDAT Recommendations

- Presentation
- Public Comment
- GPAC discussion

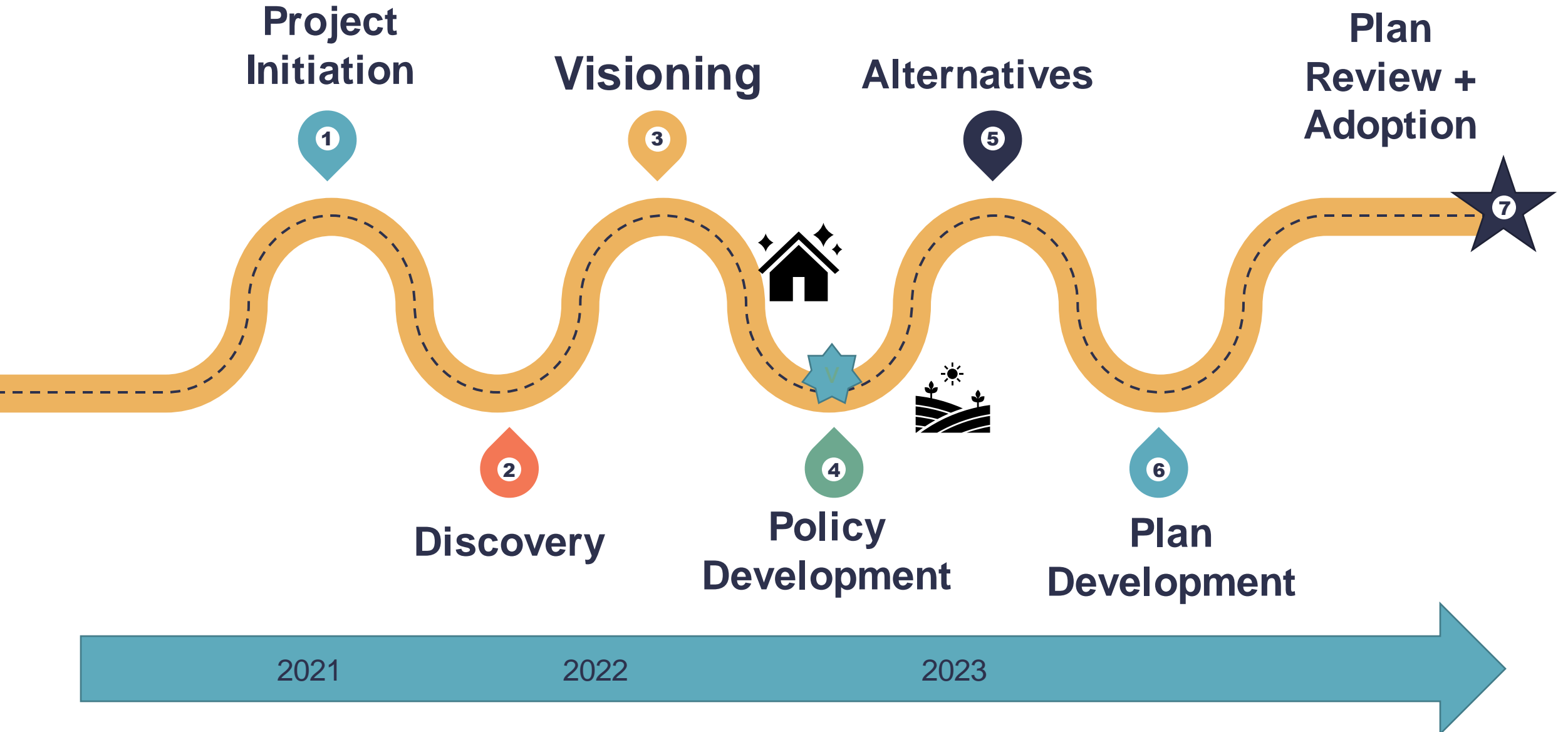
8:55pm: Final GPAC Thoughts



General Public Comment

Project & Staff Updates

Project Roadmap



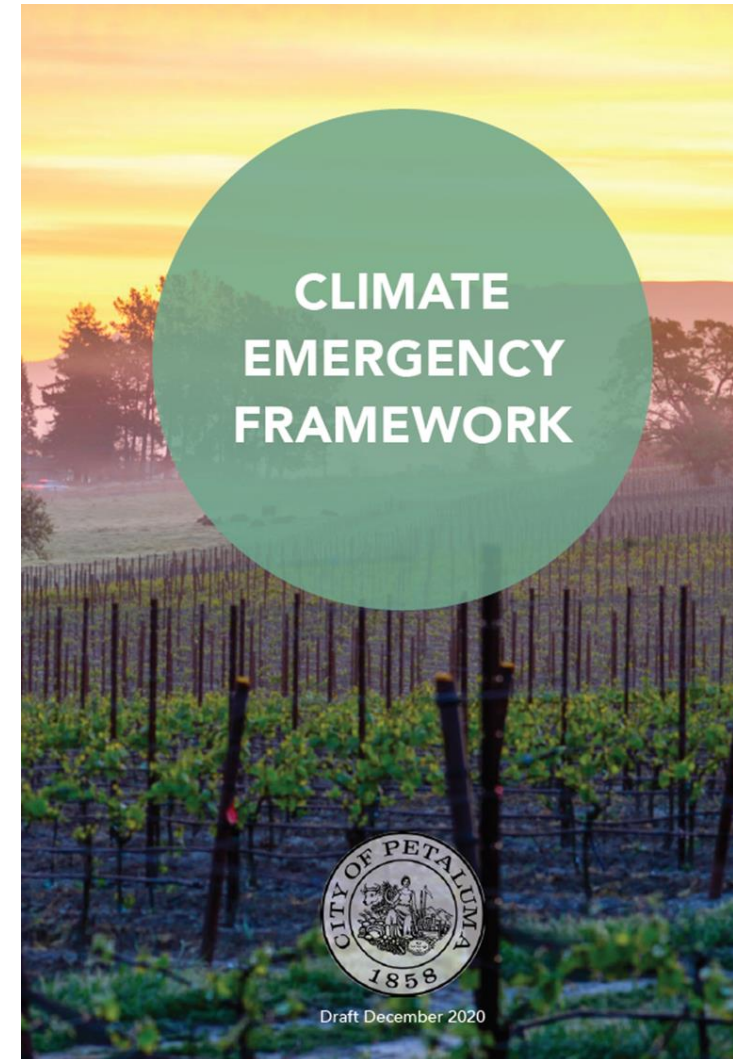
Housing Element Final Steps

- March 14: Planning Commission recommendation
- March 20: Council adoption
- April-May: 60-day HCD review for certification



Climate Action Planning

- **Spring:** Greenhouse Gas Reduction Public Draft for community review
- **Ongoing:** Continue to align General Plan, VMT reductions, GHG Reduction Strategy, adaptation planning, and GP CEQA EIR



Mapping the River: Floodplain and Sea Level Rise

- **Now:** Finalizing work with West Consulting and Sherwood Engineers on model runs and mapping
- **Next:** Discussion of updated mapping with the GPAC and community



Other updates?

- Sign up for the Community Update and Meeting notices!
- **CityOfPetaluma.org/Subscribe**



Clarifying Questions from GPAC Members

SDAT Presentation

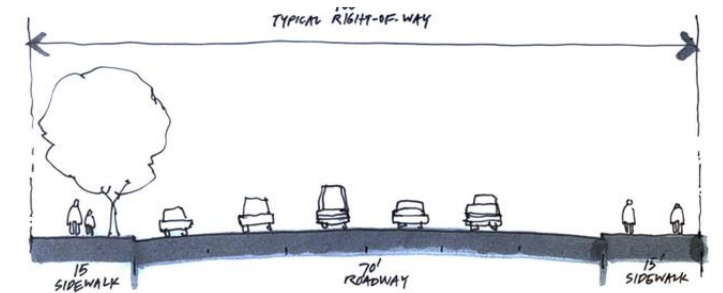
Clarifying Questions from GPAC Members

Public Comments

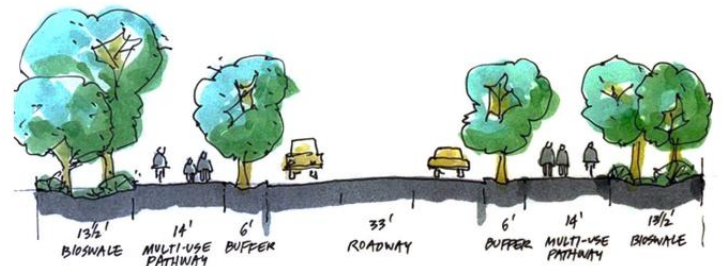
Discussion

Discussion Prompts

- Reactions: Anything surprising? What are you particularly excited about? Anything missing?
- What do you think of some of the more transformative recommendations? Examples:
 - Re-thinking mobility on Washington
 - Integrate non-residential uses into single-family neighborhoods with 15-minute (nodes)
- What implementation steps can be started now, while the GPU is being completed? (see p. 51 of the report)



EXISTING



PROPOSED
SCALE = 1" = 100'

Narrow existing roadways to reduce them as barriers to active transportation.

Final GPAC Thoughts